

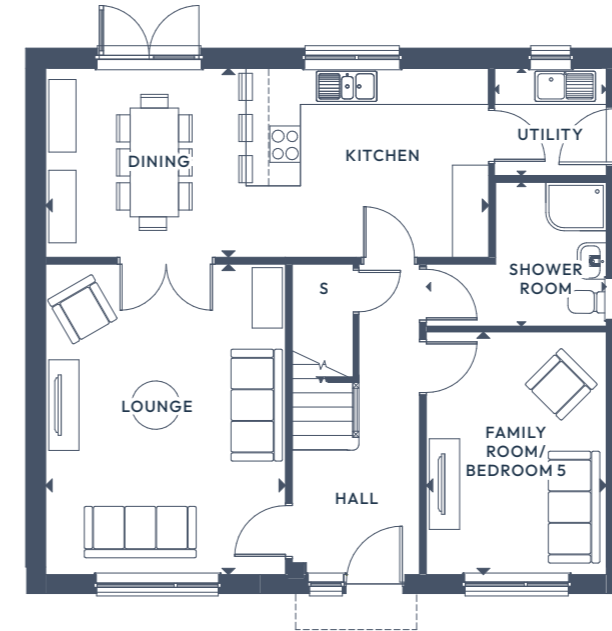


The Orchid.

5 BEDROOM DETACHED

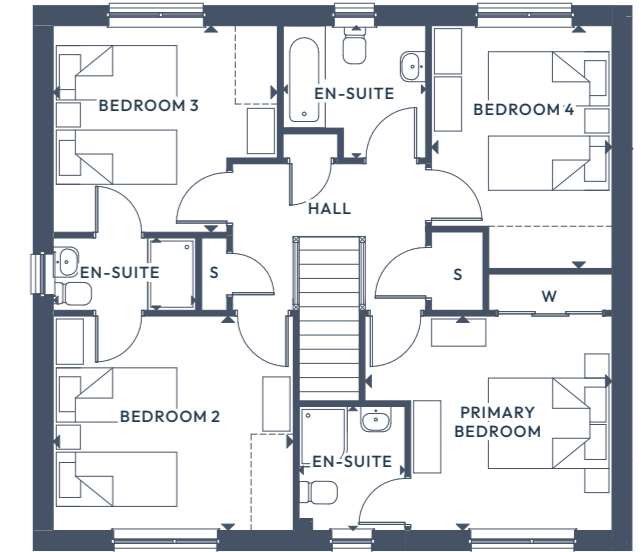
GROUND FLOOR:

FIRST FLOOR:



GROUND FLOOR

Lounge	5.14m x 3.96m	16'10" x 13'0"
Kitchen/Dining	7.33m x 3.13m	24'0 1/2" x 10'3"
Utility	1.78m x 1.85m	5'10" x 6'1"
Shower Room	2.38m x 2.98m	7'9 1/2" x 9'9"
Family Room/Bedroom 5	4.02m x 2.98m	13'2" x 9'9"



FIRST FLOOR

Primary Bedroom	3.56m x 4.10m	11'8" x 13' 5 1/2"
Primary En-Suite	2.06m x 1.76m	6'9" x 5'9"
Bedroom 2	3.56m x 3.98m	11'8" x 13' 1"
En-Suite	1.20m x 2.37m	3'11" x 7'9"
Bedroom 3	3.43m x 3.72m	11'3" x 12'2 1/2"
Bedroom 4	4.03m x 3.00m	13'2 1/2" x 9'10"
Bathroom	2.20m x 2.37m	7'2 1/2" x 7'9"

ALL ROOMS ARE MEASURED FROM POINT TO POINT AS INDICATED ▲

The plans, illustrations, photography and sizes are indicative. The images depict standard specification and optional upgrades. Choices available depending on build stage. We operate a policy of continuous product development and therefore individual features, specification and elevational treatments may vary at the discretion of Campion Homes. Consequently, these particulars do not form any part of any contract.