

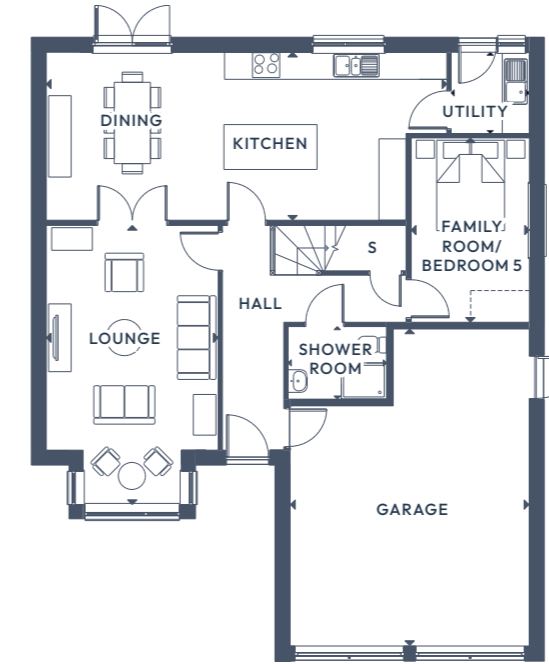


The Azalea.

5 BEDROOM DETACHED

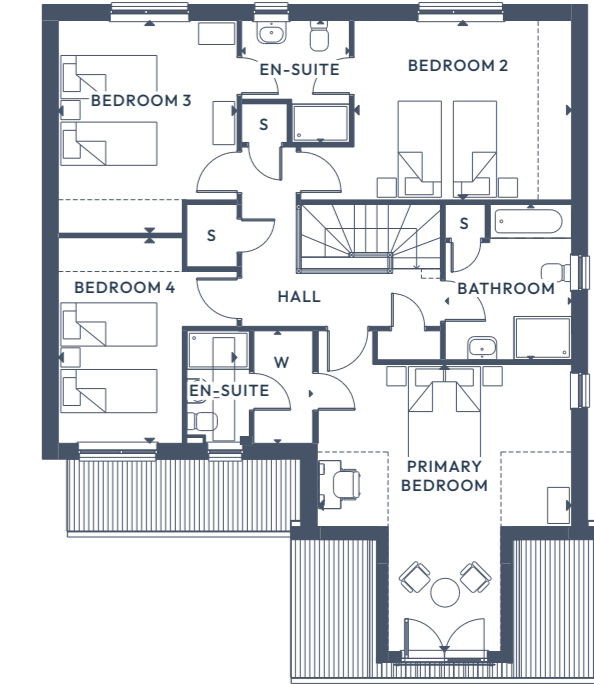
GROUND FLOOR:

FIRST FLOOR:



GROUND FLOOR

Lounge	6.17m x 3.80m	20'3" x 12'5 1/2"
Kitchen/Dining	3.72m x 8.86m	12'2 1/2" x 29'0 1/2"
Utility	1.80m x 1.73m	5'11" x 5'8"
Shower Room	1.61m x 2.18m	5'3" x 7'1 1/2"
Bedroom 5	4.08m x 2.61m	13'4 1/2" x 8'7"
Garage	5.98m x 5.28m	19'7 1/2" x 17'3 1/2"



FIRST FLOOR

Primary Bedroom	5.98m x 5.28m	19'7 1/2" x 17'3 1/2"
En-Suite	2.34m x 1.30m	7'8" x 4'3"
Wardrobe	2.34m x 1.23m	7'8" x 4'0"
Bedroom 2	3.73m x 5.64m	12'3" x 18'6"
Bedroom 3	4.43m x 3.72m	14'6" x 12'2 1/2"
En-Suite	2.54m x 2.24m	8'4" x 7'4 1/2"
Bedroom 4	4.28m x 3.72m	14'0 1/2" x 12'2 1/2"
Bathroom	3.23m x 2.63m	10'7" x 8'7 1/2"

ALL ROOMS ARE MEASURED FROM POINT TO POINT AS INDICATED ▲

The plans, illustrations, photography and sizes are indicative. The images depict standard specification and optional upgrades. Choices available depending on build stage. We operate a policy of continuous product development and therefore individual features, specification and elevational treatments may vary at the discretion of Campion Homes. Consequently, these particulars do not form any part of any contract.