

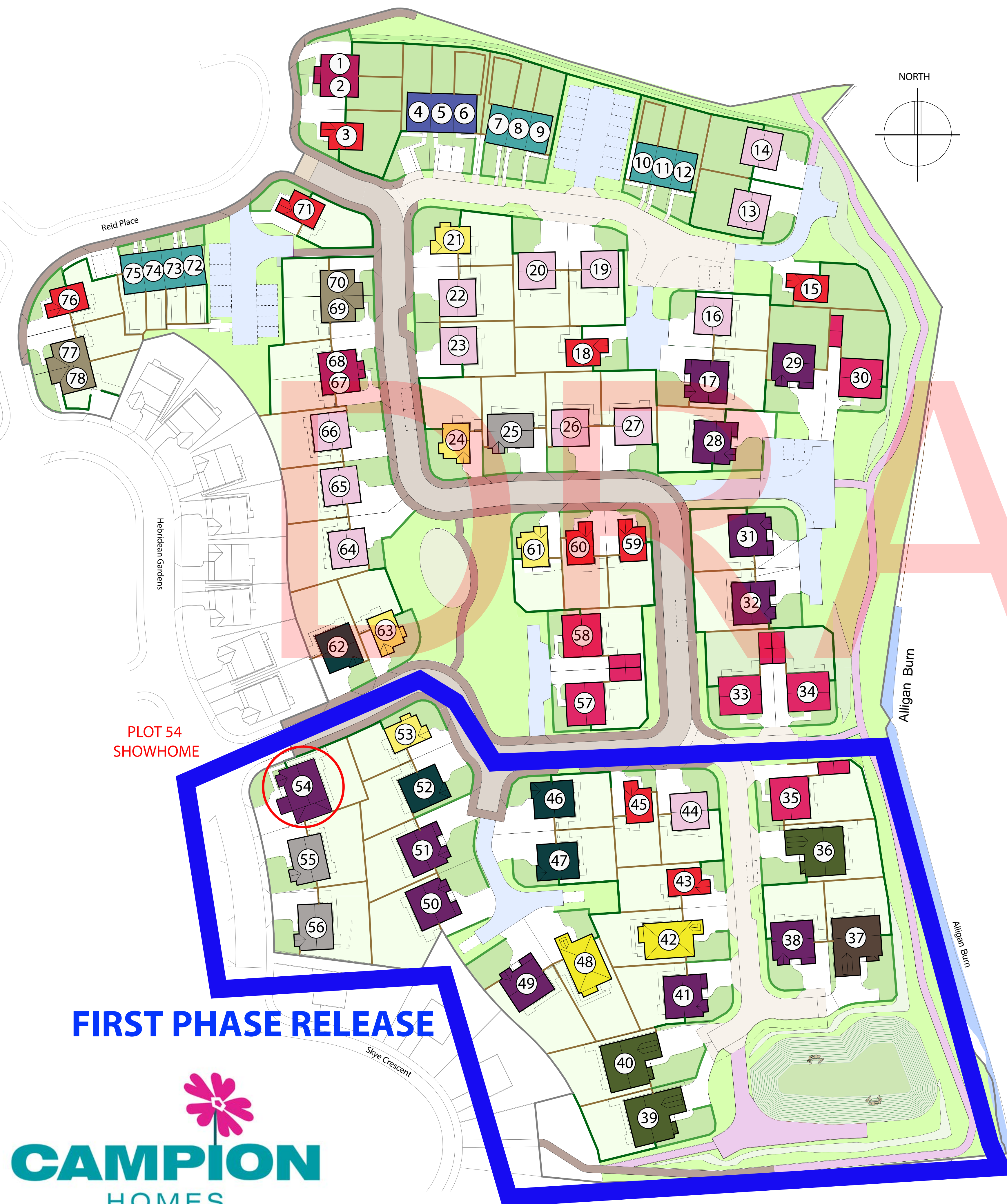
STRATHEARN GAIT

Crieff

- Azalea - 5 bed
PLOTS 36/37/39/40
- Japonica - 5 bed
PLOTS 42/48
- Orchid - 5 bed
PLOTS 30/33/34/35/57/58
- Oleander - 4 bed
PLOTS 17/28/29/31/32/38/41/49/50/51/54
- Jacaranda - 5 bed
PLOTS 25/55/56
- Laburnum - 4 bed
PLOTS 46/47/52/62
- Wisteria - 4 bed
PLOTS 13/14/16/19/20/22/23/26/27/44/64/65/66
- Lavender - 3 bed
PLOTS 21/24/53/61/63
- Myrtle - 3 bed
PLOTS 69/70/77/78
- Alamanda - 3 bed
PLOTS 3/15/18/43/45/59/60/71/76
- Holly - 3 bed
PLOTS 4/5/6
- Hazel - 3 bed
PLOTS 1/2/67/68
- Mimosa - 2 bed
PLOTS 7/8/9/10/11/12/72/73/74/75

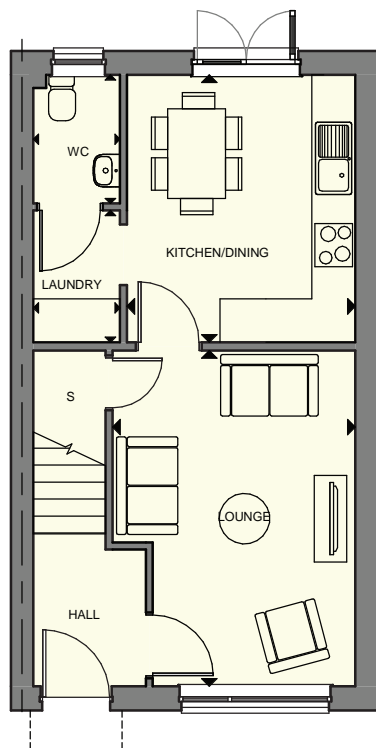
Enjoy a contemporary new build property in a traditional market town, with picturesque Perthshire views and world-beating Scottish landscapes.

In a rural yet accessible area of Perthshire, welcome to the brand new Crieff housing development with Campion. Featuring an incredible collection of aspirational, 2 - 5 bedroom new build houses, our stunning Crieff development allows you to make the most of rural Scottish life, whilst being connected to major cities and areas.



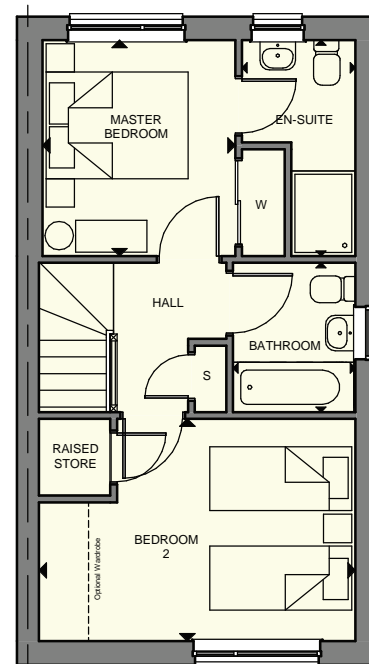


MIMOSA
2 bedroom terraced villa



GROUND FLOOR

Lounge	4.65 x 3.36m	15' 3" x 11' 0"
Kitchen / Dining	3.70 x 3.16m	12' 1" x 10' 4"
Laundry	1.83 x 1.20m	6' 0" x 3' 11"
WC	1.78 x 1.20m	5' 10" x 3' 11"



FIRST FLOOR

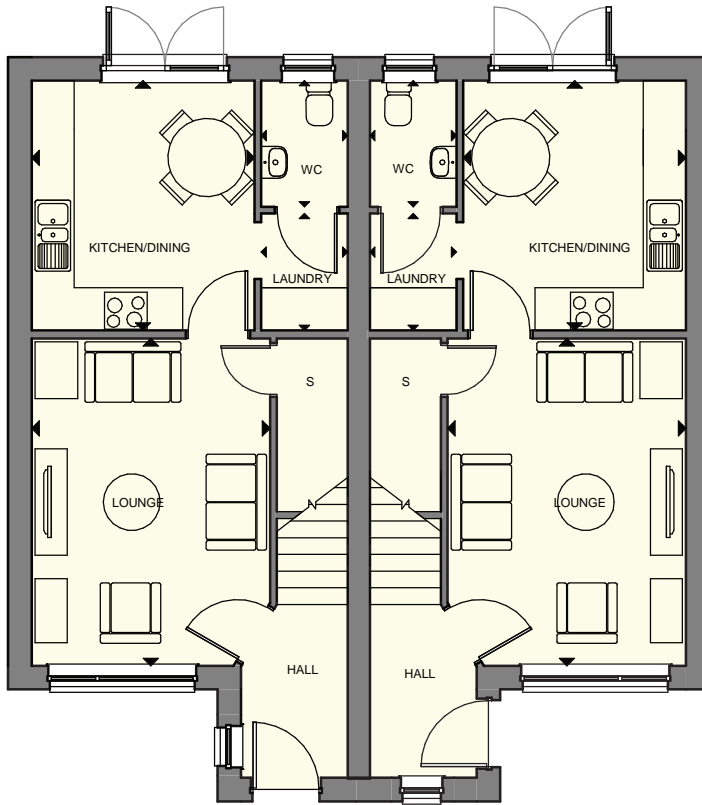
Master Bedroom	3.04 x 2.72m	9' 11" x 8' 11"
En-Suite 1	2.83 x 1.60m	9' 3" x 5' 3"
Bedroom 2	3.13 x 4.46m	10' 3" x 14' 7"
Bathroom	2.10 x 1.73 m	6' 10" x 5' 8"

ALL ROOMS ARE MEASURED FROM POINT TO POINT AS INDICATED ABOVE ▲

The plans, illustrations, photography and sizes are indicative. We operate a policy of continuous product development and therefore individual features, specification and elevational treatments may vary at the discretion of Campion Homes. Consequently, these particulars do not form part of any contract

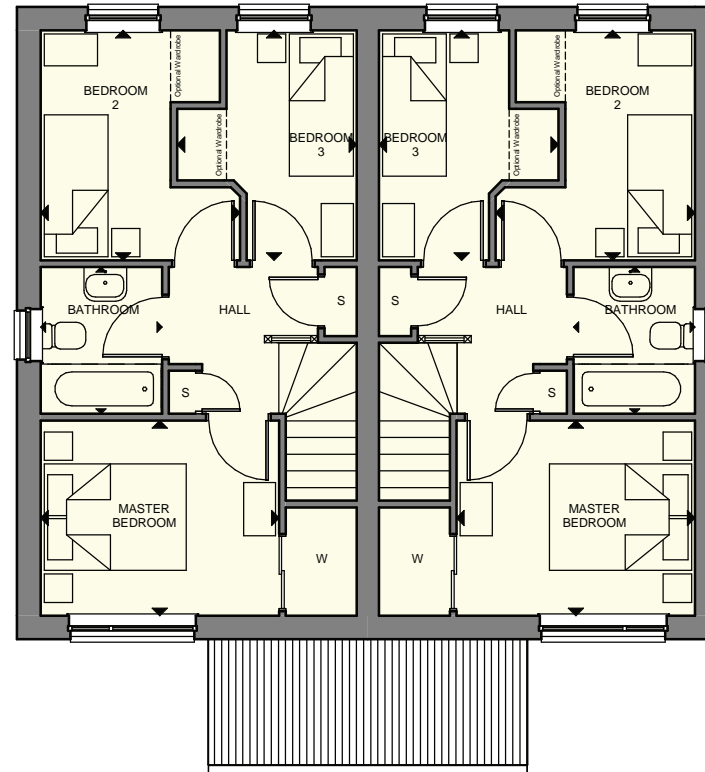


HAZEL
3 bedroom semi-detached villa



GROUND FLOOR

Lounge	4.61 x 3.36m	15' 1" x 11' 0"
Kitchen / Dining	3.52 x 3.14m	11' 6" x 10' 3"
Laundry	1.64 x 1.22m	5' 4" x 4' 0"
WC	1.78 x 1.22m	5' 10" x 4' 0"



FIRST FLOOR

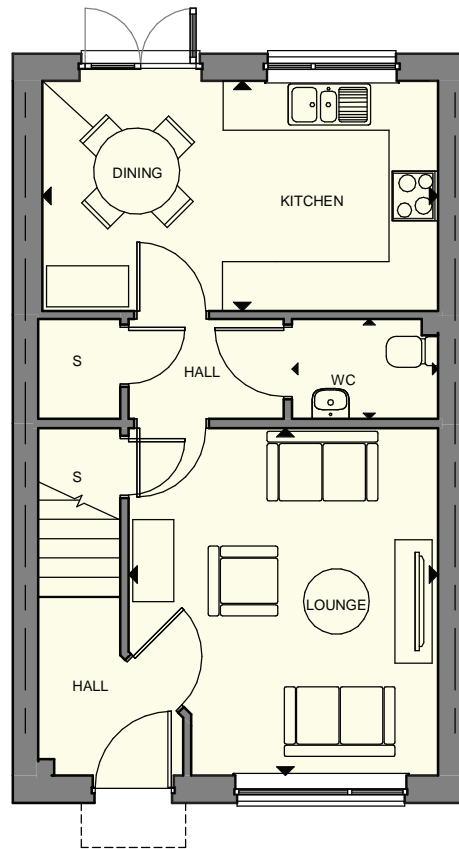
Master Bedroom	2.75 x 3.36m	9' 0" x 11' 0"
Bedroom 2	3.24 x 2.75m	10' 7" x 8' 10"
Bedroom 3	3.24 x 2.53m	10' 7" x 8' 3"
Bathroom	2.07 x 1.71m	6' 9" x 5' 7"

ALL ROOMS ARE MEASURED FROM POINT TO POINT AS INDICATED ABOVE ▲

The plans, illustrations, photography and sizes are indicative. We operate a policy of continuous product development and therefore individual features, specification and elevational treatments may vary at the discretion of Campion Homes. Consequently, these particulars do not form part of any contract

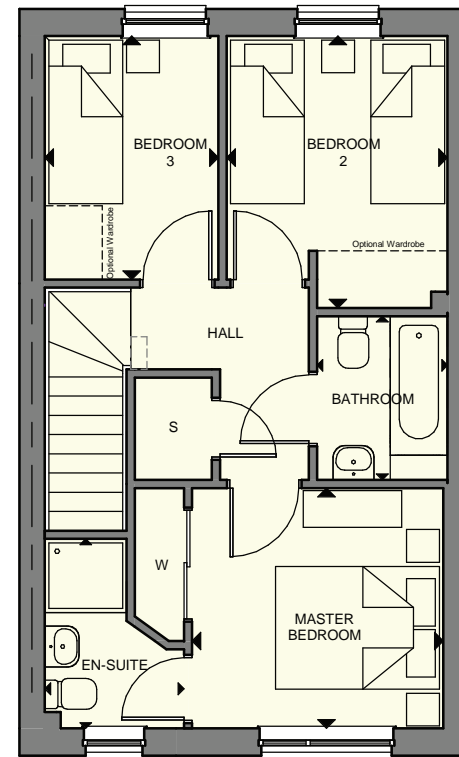


HOLLY
3 bedroom semi-detached villa



GROUND FLOOR

Lounge	4.24 x 3.82m	13' 10" x 12' 6"
Kitchen / Dining	2.80 x 4.87m	9' 2" x 15' 11"
WC	1.22 x 1.78m	4' 0" x 5' 10"



FIRST FLOOR

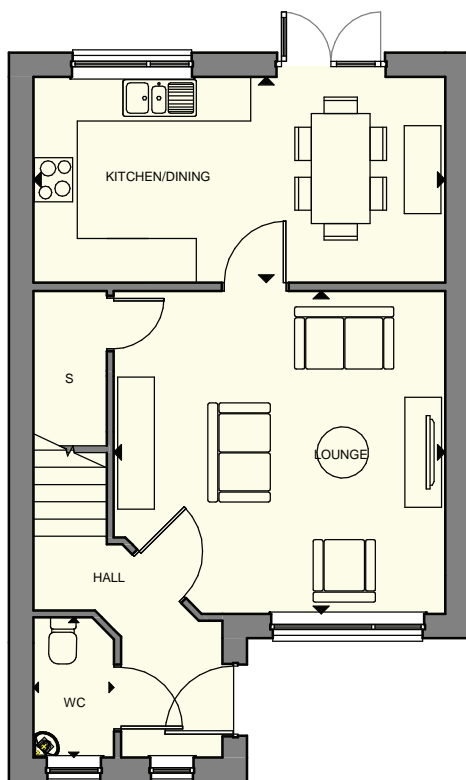
Master Bedroom	2.94 x 3.12m	9' 7" x 10' 3"
En-Suite 1	2.32 x 1.70m	7' 7" x 5' 7"
Bedroom 2	3.32 x 2.70m	10' 11" x 8' 10"
Bedroom 3	2.98 x 2.12m	9' 9" x 6' 11"
Bathroom	2.00 x 1.60m	6' 6" x 5' 3"

ALL ROOMS ARE MEASURED FROM POINT TO POINT AS INDICATED ABOVE ▲

The plans, illustrations, photography and sizes are indicative. We operate a policy of continuous product development and therefore individual features, specification and elevational treatments may vary at the discretion of Campion Homes. Consequently, these particulars do not form part of any contract

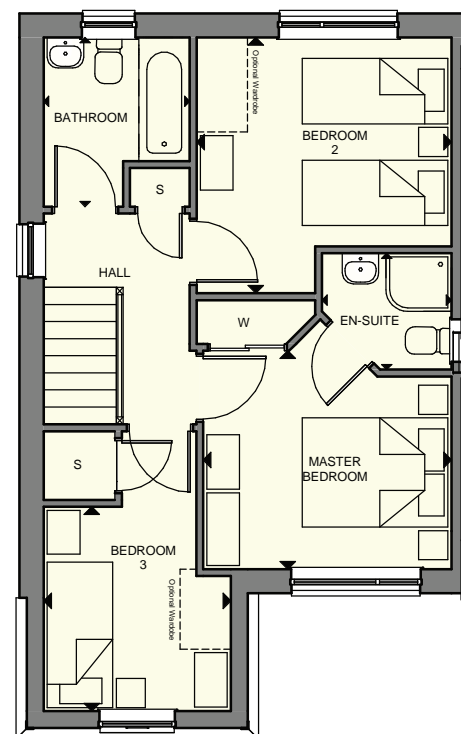


ALAMANDA
3 bedroom detached villa



GROUND FLOOR

Lounge	4.40 x 4.52m	14' 5" x 14' 10"
Kitchen / Dining	2.80 x 5.61m	9' 2" x 18' 5"
WC	1.91 x 1.10m	6' 3" x 3' 7"



FIRST FLOOR

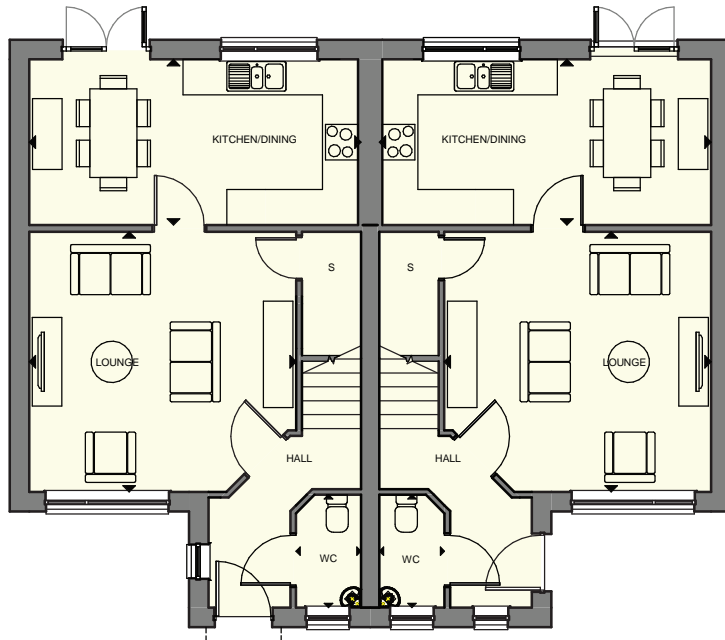
Master Bedroom	3.01 x 3.42m	9' 10" x 11' 2"
En-Suite 1	1.60 x 1.78m	5' 3" x 5' 10"
Bedroom 2	3.52 x 3.51m	11' 6" x 11' 6"
Bedroom 3	2.80 x 2.58m	9' 2" x 8' 5"
Bathroom	2.33 x 2.01m	7' 7" x 6' 7"

ALL ROOMS ARE MEASURED FROM POINT TO POINT AS INDICATED ABOVE ▲

The plans, illustrations, photography and sizes are indicative. We operate a policy of continuous product development and therefore individual features, specification and elevational treatments may vary at the discretion of Campion Homes. Consequently, these particulars do not form part of any contract

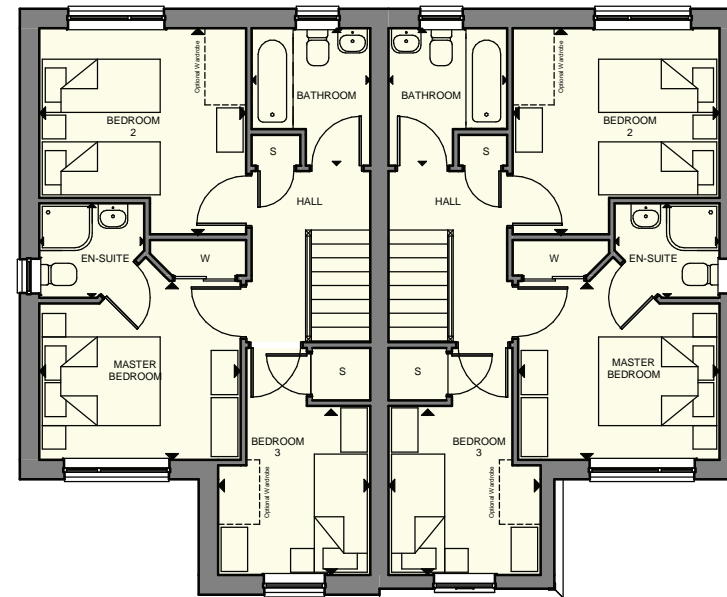


MYRTLE
3 bedroom semi-detached villa



GROUND FLOOR

Lounge	4.40 x 4.52m	14' 5" x 14' 10"
Kitchen / Dining	2.80 x 5.56m	9' 2" x 18' 3"
WC	1.91 x 1.10m	6' 3" x 3' 7"



FIRST FLOOR

Master Bedroom	3.03 x 3.42m	9' 11" x 11' 2"
En-Suite 1	1.60 x 1.78m	5' 3" x 5' 10"
Bedroom 2	3.49 x 3.51m	11' 5" x 11' 6"
Bedroom 3	2.80 x 2.58m	9' 2" x 8' 5"
Bathroom	2.33 x 2.01m	7' 7" x 6' 7"

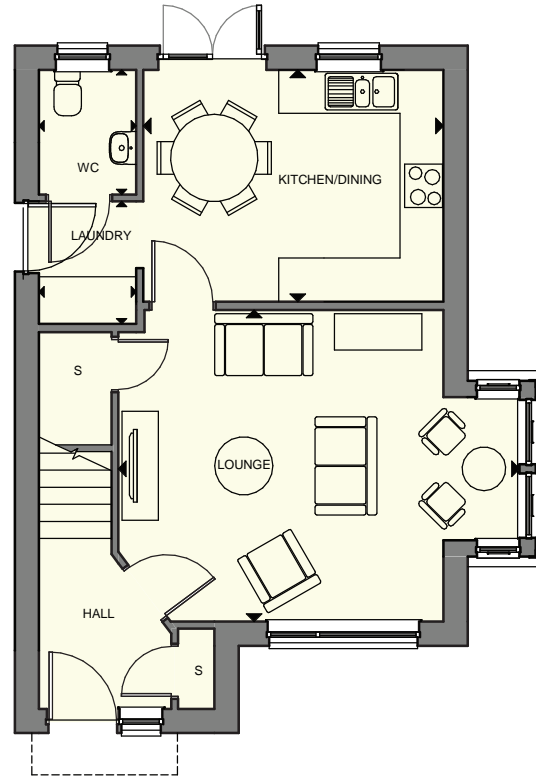
ALL ROOMS ARE MEASURED FROM POINT TO POINT AS INDICATED ABOVE ▲

The plans, illustrations, photography and sizes are indicative. We operate a policy of continuous product development and therefore individual features, specification and elevational treatments may vary at the discretion of Campion Homes. Consequently, these particulars do not form part of any contract



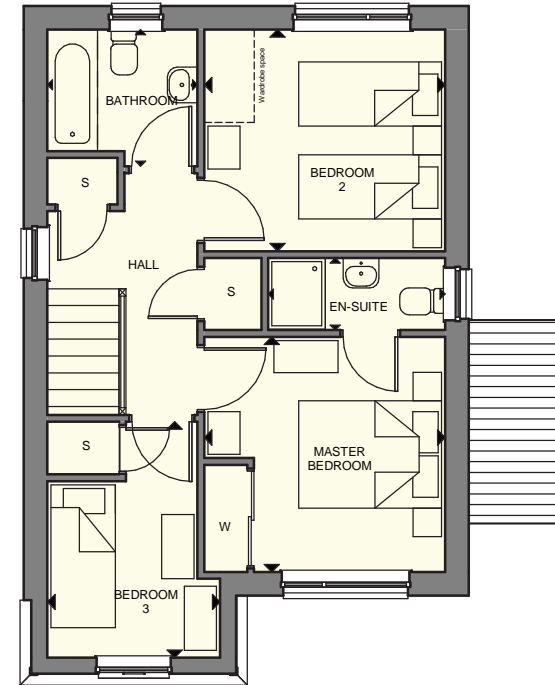
LAVENDER
3 bedroom detached villa





GROUND FLOOR

Lounge	4.29 x 5.48m	14' 1" x 18' 0"
Kitchen / Dining	3.19 x 4.13m	10' 6" x 16' 7"
Laundry	1.63 x 1.34m	5' 4" x 4' 5"
WC	1.78 x 1.34m	5' 10" x 4' 5"



FIRST FLOOR

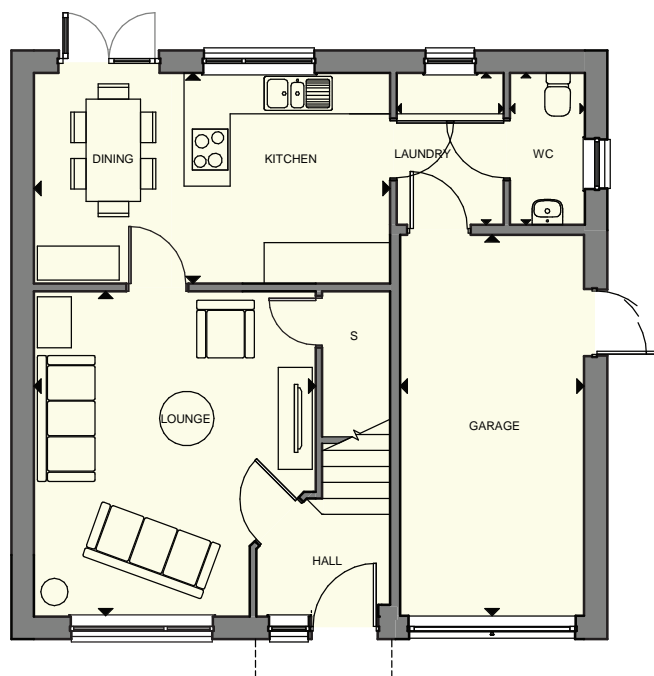
Master Bedroom	3.29 x 3.37m	10' 10" x 11' 1"
En-Suite 1	1.01 x 2.47m	3' 4" x 8' 2"
Bedroom 2	3.10 x 3.37m	10' 2" x 11' 1"
Bedroom 3	3.30 x 2.42m	10' 10" x 7' 11"
Bathroom	1.91 x 2.10m	6' 4" x 6' 11"

ALL ROOMS ARE MEASURED FROM POINT TO POINT AS INDICATED ABOVE ▲

The plans, illustrations, photography and sizes are indicative. We operate a policy of continuous product development and therefore individual features, specification and elevational treatments may vary at the discretion of Campion Homes. Consequently, these particulars do not form part of any contract

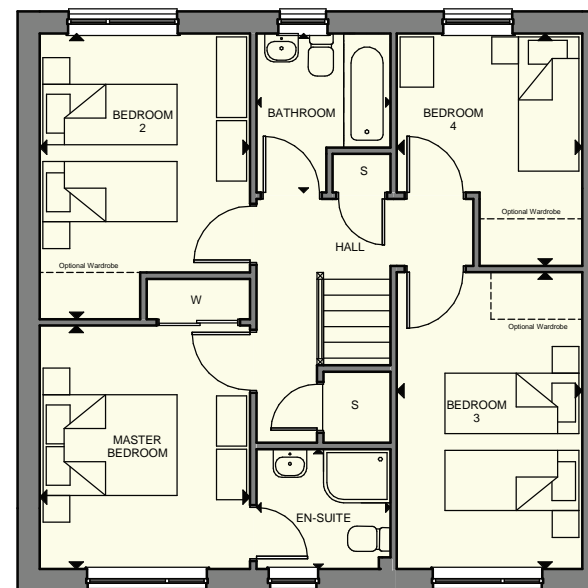


WISTERIA
4 bedroom detached villa



GROUND FLOOR

Lounge	4.78 x 4.14m	15' 8" x 13' 7"
Kitchen / Dining	3.09 x 5.23m	10' 1" x 17' 2"
Laundry	2.23 x 1.57m	7' 3" x 5' 2"
WC	2.23 x 1.10m	7' 3" x 3' 7"
Garage	5.60 x 2.70m	18' 4" x 8' 10"



FIRST FLOOR

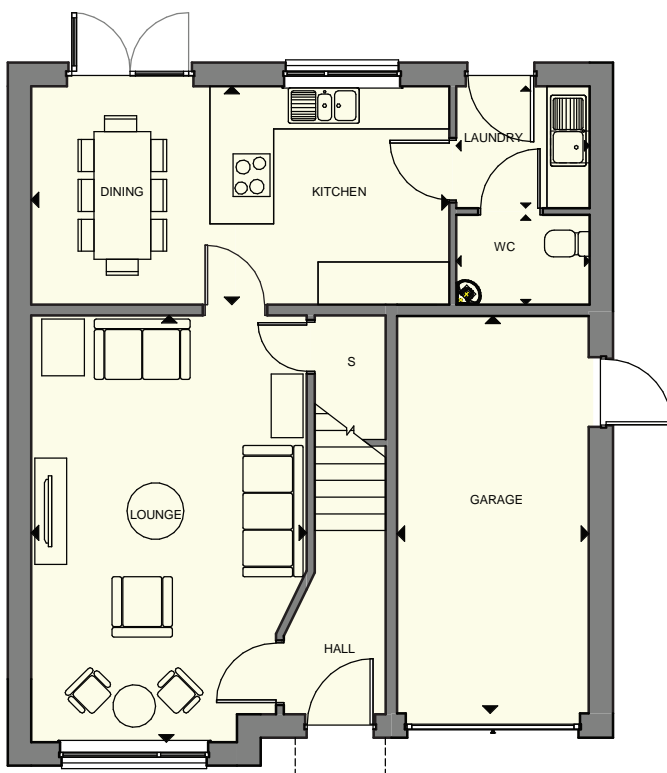
Master Bedroom	3.63 x 3.14m	11' 11" x 10' 3"
En-Suite 1	1.79 x 2.00m	5' 10" x 6' 7"
Bedroom 2	4.26 x 3.14m	13' 11" x 10' 3"
Bedroom 3	4.43 x 2.76m	14' 6" x 9' 1"
Bedroom 4	3.47 x 2.77m	11' 4" x 9' 1"
Bathroom	2.37 x 2.00m	7' 9" x 6' 7"

ALL ROOMS ARE MEASURED FROM POINT TO POINT AS INDICATED ABOVE ▲

The plans, illustrations, photography and sizes are indicative. We operate a policy of continuous product development and therefore individual features, specification and elevational treatments may vary at the discretion of Campion Homes. Consequently, these particulars do not form part of any contract

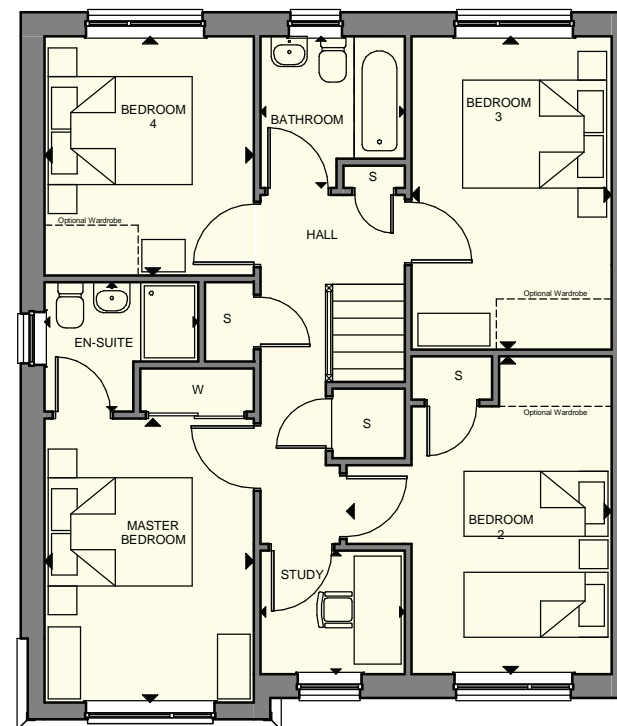


LABURNUM
4 bedroom detached villa



GROUND FLOOR

Lounge	6.02 x 3.90m	19' 9" x 12' 9"
Kitchen / Dining	3.08 x 5.89m	10' 1" x 19' 4"
Laundry	1.72 x 1.88m	5' 7" x 6' 2"
WC	1.27 x 1.88m	4' 2" x 6' 2"
Garage	5.60 x 2.70m	18' 4" x 8' 10"



FIRST FLOOR

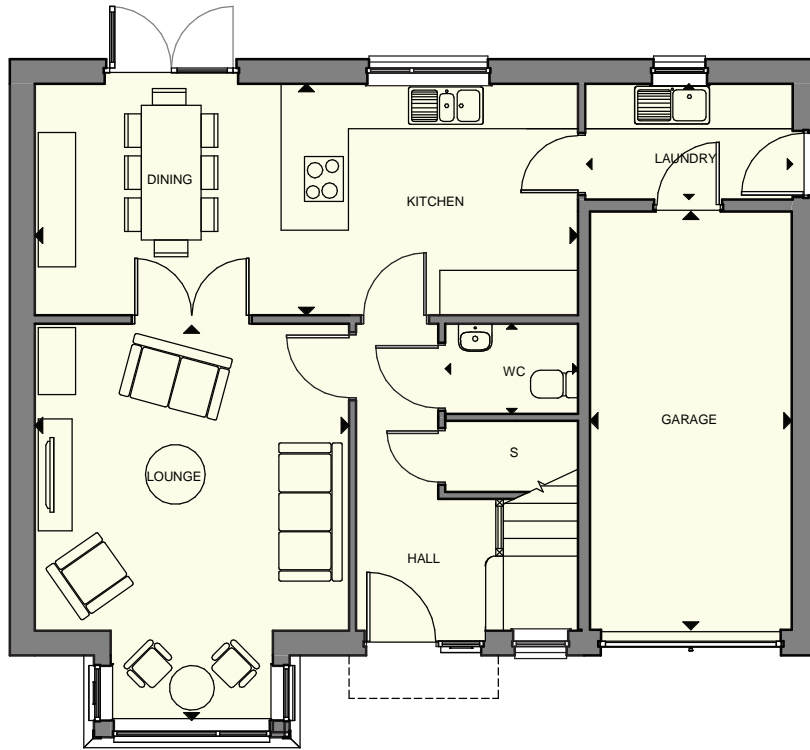
Master Bedroom	3.94 x 2.90m	12'11" x 9' 6"
En-Suite 1	1.80 x 2.13m	5' 10" x 7' 0"
Bedroom 2	4.41 x 3.69m	14' 5" x 12' 1"
Bedroom 3	4.35 x 2.78m	14' 3" x 9' 1"
Bedroom 4	3.32 x 2.90m	10' 10" x 9' 6"
Study	1.71 x 2.00m	5' 7" x 6' 7"
Bathroom	2.16 x 2.00m	6'11" x 6' 7"

ALL ROOMS ARE MEASURED FROM POINT TO POINT AS INDICATED ABOVE ▲

The plans, illustrations, photography and sizes are indicative. We operate a policy of continuous product development and therefore individual features, specification and elevational treatments may vary at the discretion of Campion Homes. Consequently, these particulars do not form part of any contract

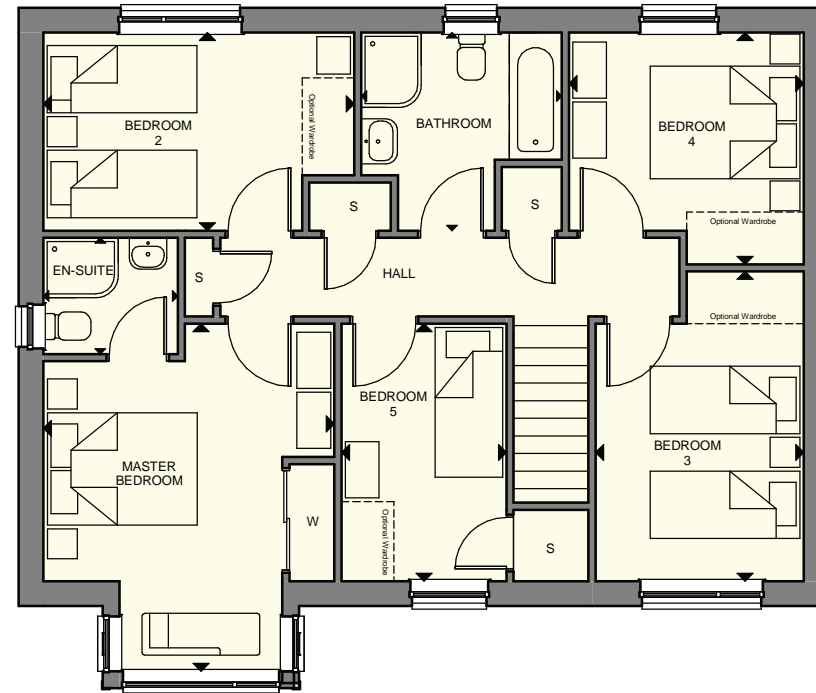


JACARANDA
5 bedroom detached villa



GROUND FLOOR

Lounge	5.31 x 4.21m	17' 5" x 13' 9"
Kitchen / Dining	3.10 x 7.28m	10' 2" x 23' 10"
Laundry	1.55 x 2.78m	5' 1" x 9' 1"
WC	1.21 x 1.78m	3' 11" x 5' 10"
Garage	5.60 x 2.70m	18' 4" x 8' 10"



FIRST FLOOR

Master Bedroom	4.64 x 3.89m	15' 3" x 12' 9"
En-Suite 1	1.55 x 1.80m	5' 1" x 5' 10"
Bedroom 2	2.65 x 4.15m	8' 8" x 13' 7"
Bedroom 3	4.13 x 2.79m	13' 7" x 9' 1"
Bedroom 4	3.10 x 3.13m	10' 2" x 10' 3"
Bedroom 5	3.44 x 2.20m	11' 3" x 7' 2"
Bathroom	2.68 x 2.65m	8' 9" x 8' 8"

ALL ROOMS ARE MEASURED FROM POINT TO POINT AS INDICATED ABOVE ▲

The plans, illustrations, photography and sizes are indicative. We operate a policy of continuous product development and therefore individual features, specification and elevational treatments may vary at the discretion of Campion Homes. Consequently, these particulars do not form part of any contract

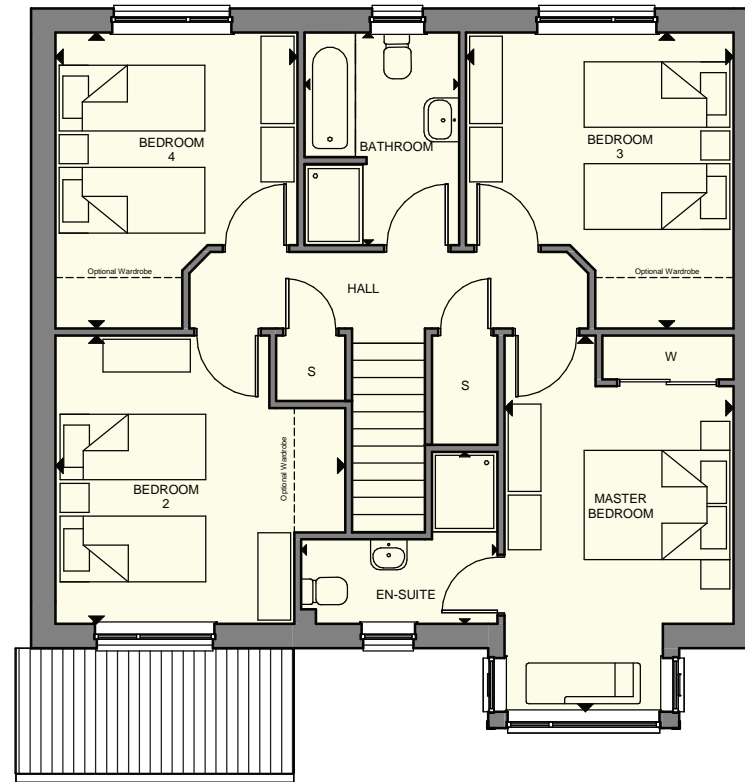


OLEANDER
4 bedroom detached villa



GROUND FLOOR

Lounge	5.97 x 4.12m	19' 7" x 13' 6"
Kitchen / Dining	3.85 x 7.35m	12' 7" x 24' 1"
Laundry	2.32 x 1.86m	7' 7" x 6' 1"
WC	1.44 x 1.86m	4' 8" x 6' 1"
Garage	5.60 x 2.70m	18' 4" x 8' 10"



FIRST FLOOR

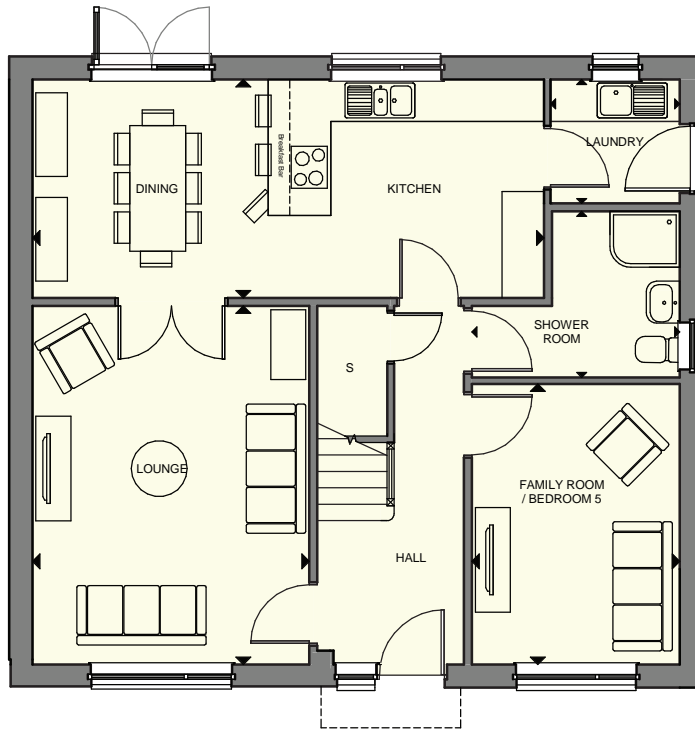
Master Bedroom	5.20 x 3.12m	17' 0" x 10' 3"
En-Suite 1	2.36 x 2.72m	7' 9" x 8' 11"
Bedroom 2	3.96 x 3.98m	12' 11" x 13' 0"
Bedroom 3	4.06 x 3.67m	13' 4" x 12' 0"
Bedroom 4	4.06 x 3.32m	13' 4" x 10' 11"
Bathroom	2.92 x 2.12m	9' 7" x 6' 11"

ALL ROOMS ARE MEASURED FROM POINT TO POINT AS INDICATED ABOVE ▲

The plans, illustrations, photography and sizes are indicative. We operate a policy of continuous product development and therefore individual features, specification and elevational treatments may vary at the discretion of Campion Homes. Consequently, these particulars do not form part of any contract

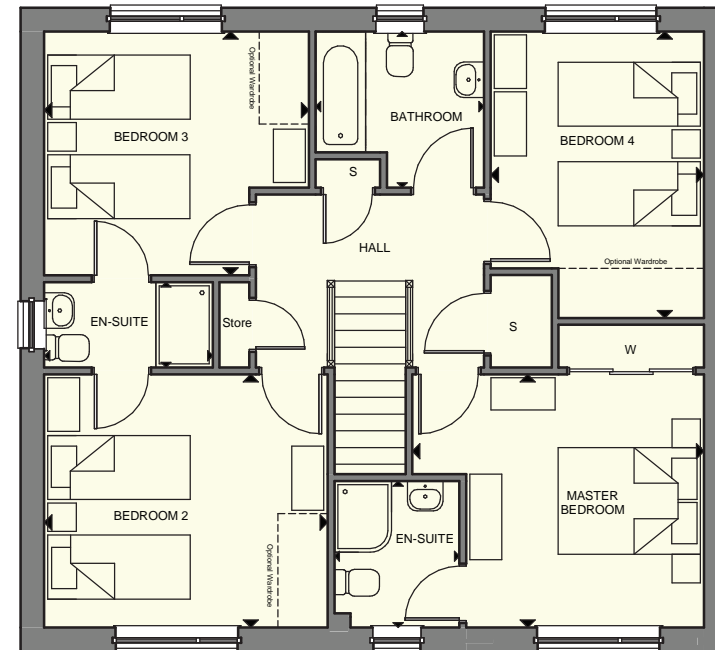


ORCHID
5 bedroom detached villa



GROUND FLOOR

Lounge	5.14 x 3.96m	16'10" x 13' 0"
Kitchen / Dining	3.13 x 7.33m	10' 3" x 24' 0"
Laundry	1.78 x 1.85m	5' 10" x 6' 1"
Shower Room	2.38 x 2.98m	7' 9" x 9' 9"
Family Room	4.02 x 2.98m	13' 2" x 9' 9"
Detached Garage	7.00 x 3.00m	22'10" x 9' 8"



FIRST FLOOR

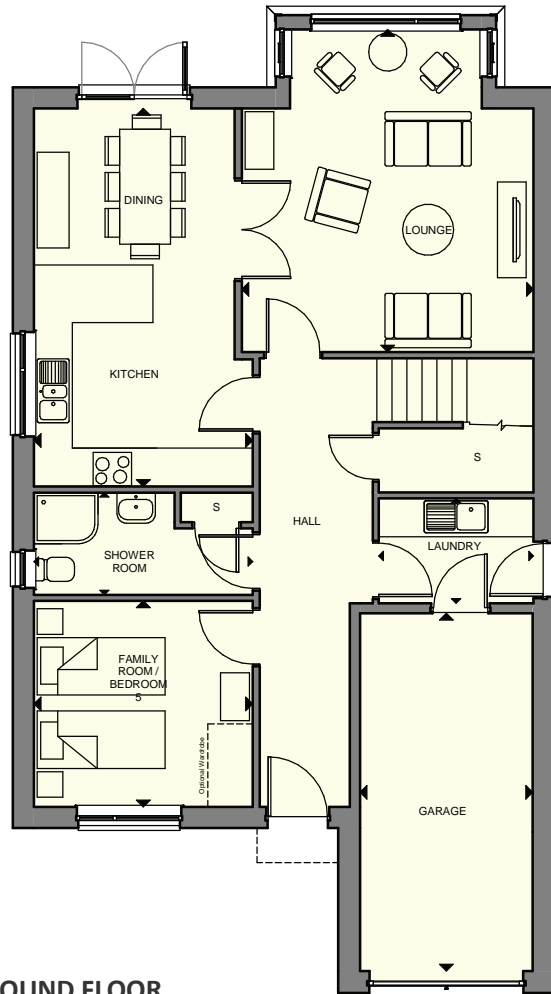
Master Bedroom	3.56 x 4.10m	11' 8" x 13' 5"
En-Suite 1	2.06 x 1.76m	6' 9" x 5' 9"
Bedroom 2	3.56 x 3.98m	11' 8" x 13' 1"
En-Suite 2	1.20 x 2.37m	3' 11" x 7' 9"
Bedroom 3	3.43 x 3.72m	11' 3" x 12' 2"
Bedroom 4	4.03 x 3.00m	13' 2" x 9' 10"
Bathroom	2.20 x 2.37m	7' 2" x 7' 9"

ALL ROOMS ARE MEASURED FROM POINT TO POINT AS INDICATED ABOVE ▲

The plans, illustrations, photography and sizes are indicative. We operate a policy of continuous product development and therefore individual features, specification and elevational treatments may vary at the discretion of Campion Homes. Consequently, these particulars do not form part of any contract

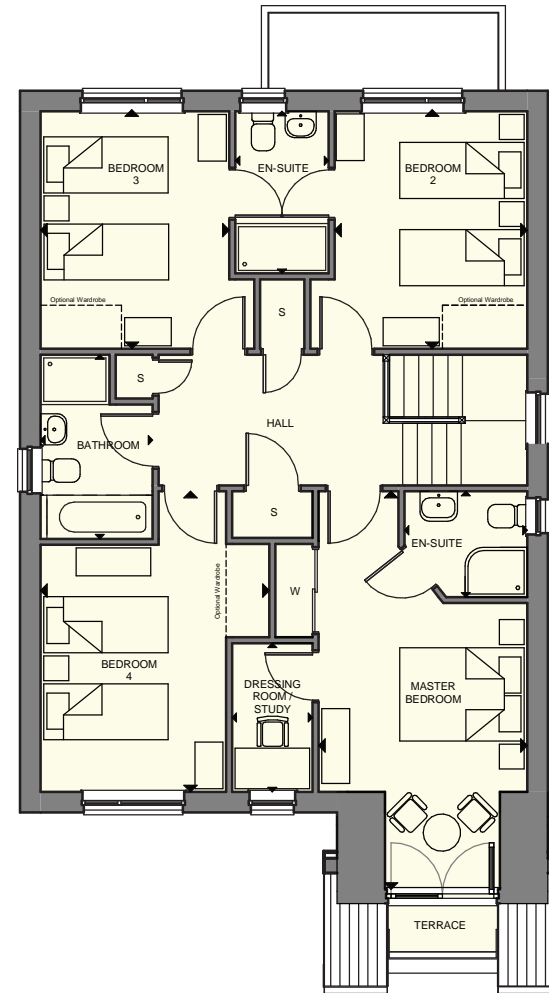


JAPONICA
5 bedroom detached villa



GROUND FLOOR

Lounge	5.05 x 4.56m	16' 7" x 14' 11"
Kitchen / Dining	5.92 x 3.42m	19' 5" x 11' 2"
Laundry	1.64 x 2.42m	5' 4" x 7' 11"
Shower Room	1.60 x 3.42m	5' 3" x 11' 2"
Family Room	3.23 x 3.42m	10' 7" x 11' 2"
Garage	5.60 x 2.70m	18' 4" x 8' 10"



FIRST FLOOR

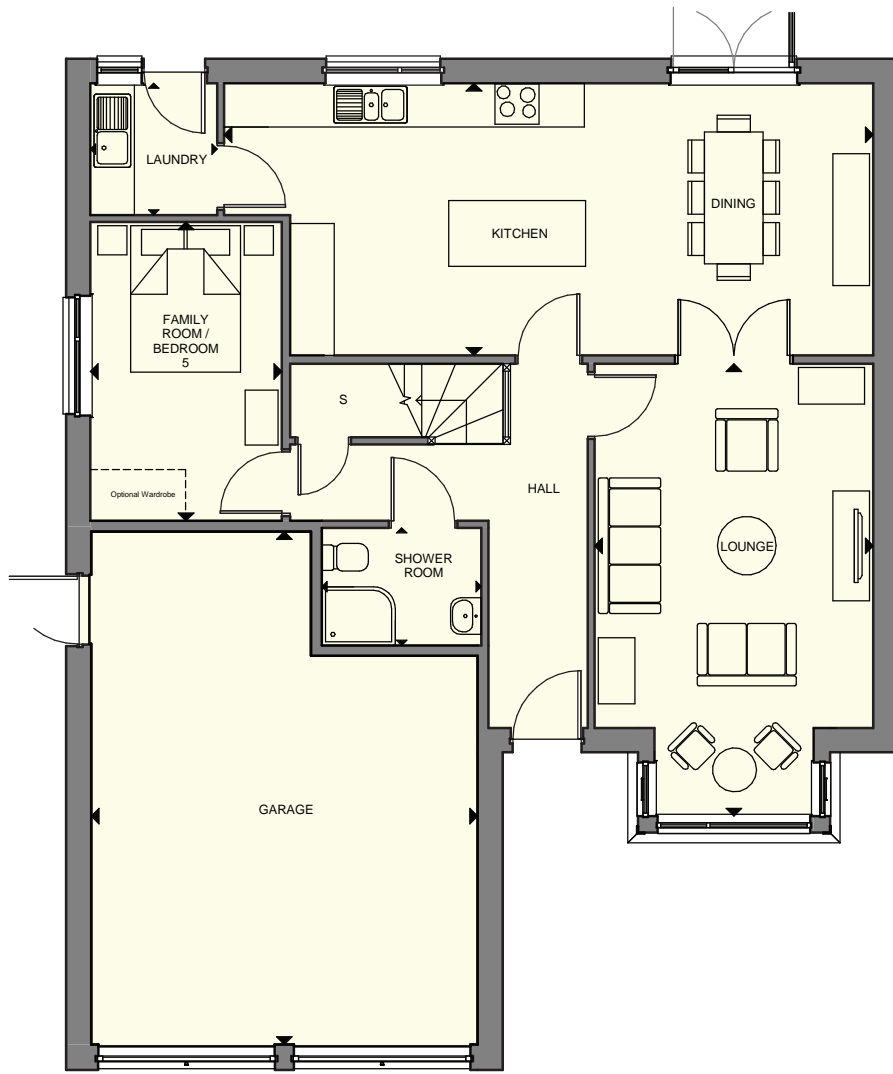
Master Bedroom	6.39 x 3.35m	20' 11" x 11' 0"
En-Suite 1	1.70 x 1.97m	5' 7" x 6' 5"
Dressing Room	2.39 x 1.30m	7' 10" x 4' 3"
Bedroom 2	3.82 x 3.49m	12' 6" x 11' 5"
En-Suite 2	2.60 x 1.50m	8' 6" x 4' 11"
Bedroom 3	3.82 x 3.43m	12' 6" x 11' 3"
Bedroom 4	4.83 x 3.68m	15' 10" x 12' 0"
Bathroom	3.00 x 1.80m	9' 8" x 5' 11"

ALL ROOMS ARE MEASURED FROM POINT TO POINT AS INDICATED ABOVE ▲

The plans, illustrations, photography and sizes are indicative. We operate a policy of continuous product development and therefore individual features, specification and elevational treatments may vary at the discretion of Campion Homes. Consequently, these particulars do not form part of any contract

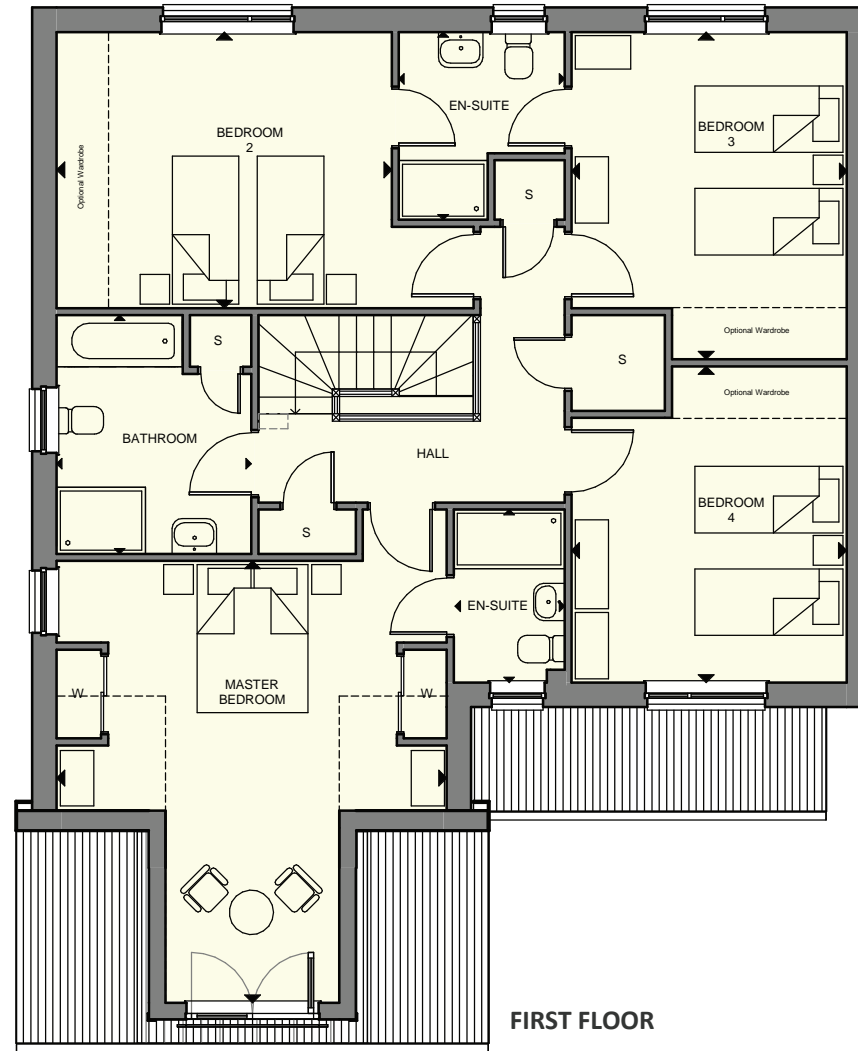


AZALEA
5 bedroom detached villa



GROUND FLOOR

Lounge	6.17 x 3.80m	20' 3" x 12' 5"
Kitchen / Dining	8.86 x 3.72m	29' 0" x 12' 2"
Laundry	1.80 x 1.73m	5' 11" x 5' 8"
Shower Room	1.61 x 2.18m	5' 3" x 7' 1"
Bedroom 5	4.08 x 2.61m	13' 4" x 8' 7"
Garage	7.00 x 5.27m	22' 11" x 17' 3"



FIRST FLOOR

Master Bedroom	5.98 x 5.28m	19' 7" x 17' 3"
En-Suite 1	2.34 x 1.50m	7' 8" x 4' 11"
Bedroom 2	3.73 x 4.45m	12' 3" x 14' 6"
En-Suite 2	2.54 x 2.24m	8' 4" x 7' 4"
Bedroom 3	4.43 x 3.72m	14' 6" x 12' 2"
Bedroom 4	4.28 x 3.72m	14' 1" x 12' 2"
Bathroom	3.23 x 2.63m	10' 7" x 8' 7"

ALL ROOMS ARE MEASURED FROM POINT TO POINT AS INDICATED ABOVE ▲

The plans, illustrations, photography and sizes are indicative. We operate a policy of continuous product development and therefore individual features, specification and elevational treatments may vary at the discretion of Campion Homes. Consequently, these particulars do not form part of any contract