

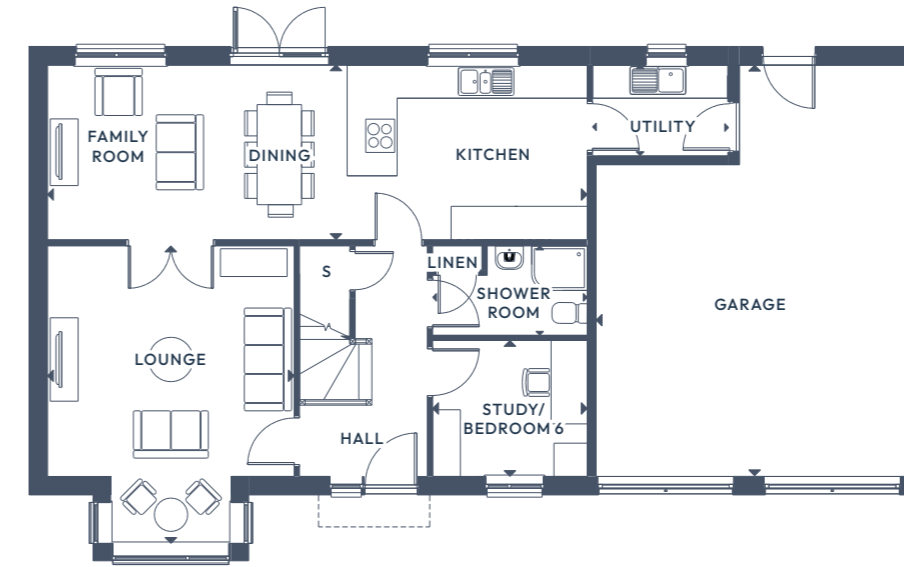


The Camellia.

6 BEDROOM DETACHED

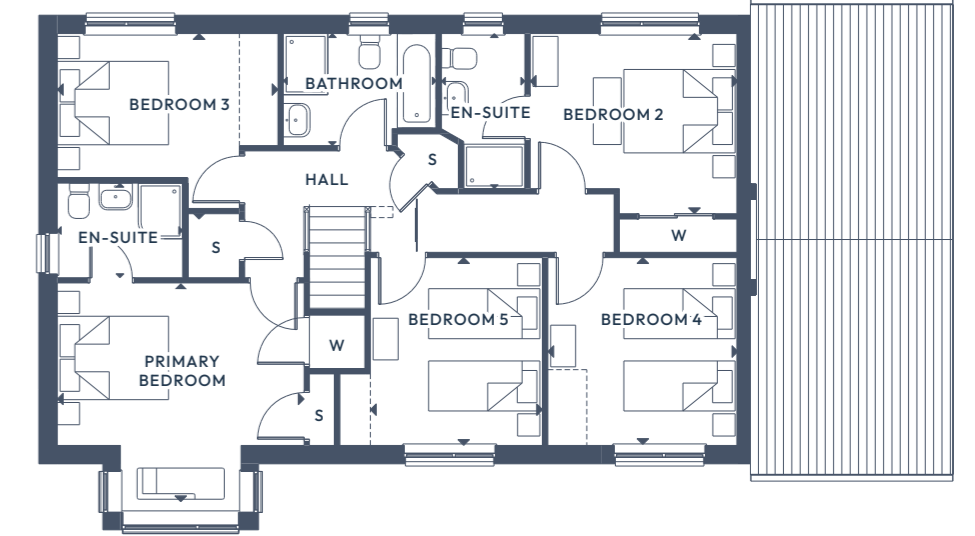
GROUND FLOOR:

FIRST FLOOR:



GROUND FLOOR

Lounge	5.39m x 4.44m	17'8" x 14'7"
Kitchen/Dining/Family	3.15m x 9.71m	10'4" x 31'10 1/2"
Study/Bedroom 6	2.45m x 2.78m	8'0 1/2" x 9'1 1/2"
Utility	1.63m x 2.43m	5'4 1/2" x 8'0"
Shower Room	1.61m x 2.78m	5'3" x 9'1 1/2"
Garage	7.40m x 5.70m	24'3" x 18'8 1/2"



FIRST FLOOR

Primary Bedroom	4.44m x 4.13m	14'7" x 13'7"
En-Suite	2.79m x 1.50m	9'2" x 4'11"
Bedroom 2	3.74m x 3.24m	12'3" x 10'8"
En-Suite	1.70m x 2.26m	5'7" x 7'5"
Bedroom 3	3.42m x 3.38m	11'3" x 11'2"
Bedroom 4	3.65m x 3.38m	11'7" x 11'2"
Bedroom 5	3.97m x 3.15m	13'0" x 10'4"
Bathroom	2.02m x 2.75m	6'7 1/2" x 9'0 1/2"

ALL ROOMS ARE MEASURED FROM POINT TO POINT AS INDICATED ▲

The plans, illustrations, photography and sizes are indicative. The images depict standard specification and optional upgrades. Choices available depending on build stage. We operate a policy of continuous product development and therefore individual features, specification and elevational treatments may vary at the discretion of Campion Homes. Consequently, these particulars do not form any part of any contract.