



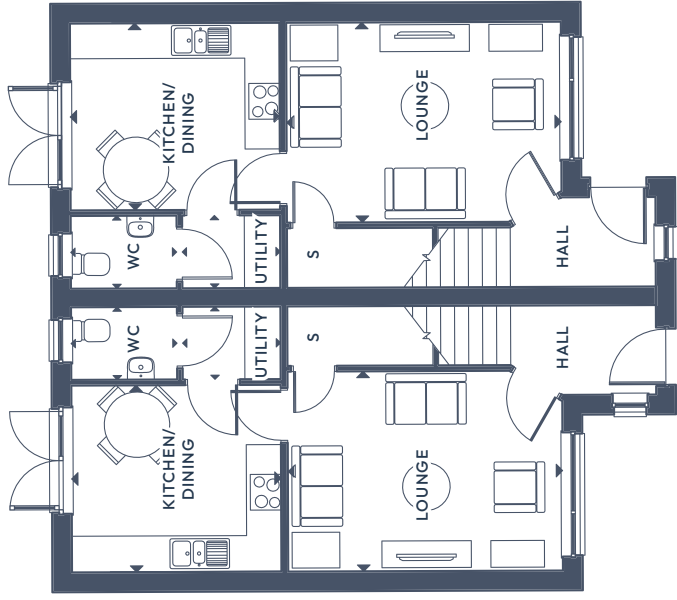
The Hazel.

3 BEDROOM SEMI-DETACHED

GROUND FLOOR:    

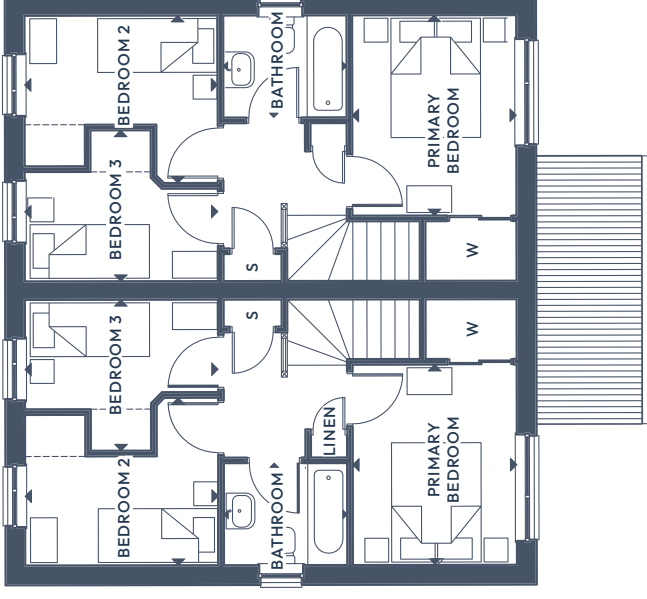
FIRST FLOOR:    





GROUND FLOOR

| | | |
|----------------|---------------|-----------------------|
| Lounge | 4.61m x 3.36m | 15'1 1/2" x 11'0" |
| Kitchen/Dining | 3.52m x 3.14m | 11'6 1/2" x 10'3 1/2" |
| Utility | 1.64m x 1.22m | 5'4 1/2" x 4'0" |
| WC | 1.78m x 1.22m | 5'10" x 4'0" |



FIRST FLOOR

| | | |
|-----------------|---------------|----------------------|
| Primary Bedroom | 2.75m x 3.36m | 9'0" x 11'0" |
| Bedroom 2 | 3.24m x 2.52m | 10'7 1/2" x 8'3 1/2" |
| Bedroom 3 | 3.24m x 2.53m | 10'7 1/2" x 8'3 1/2" |
| Bathroom | 2.07m x 1.71m | 6'9 1/2" x 5'7 1/2" |

ALL ROOMS ARE MEASURED FROM POINT TO POINT AS INDICATED ▲

The plans, illustrations, photography and sizes are indicative, the images depict standard specification and optional upgrades. Choices available depending on build stage. We operate a policy of continuous product development and therefore individual features, specification and elevational treatments may vary at the discretion of Campion Homes. Consequently, these particulars do not form any part of any contract.