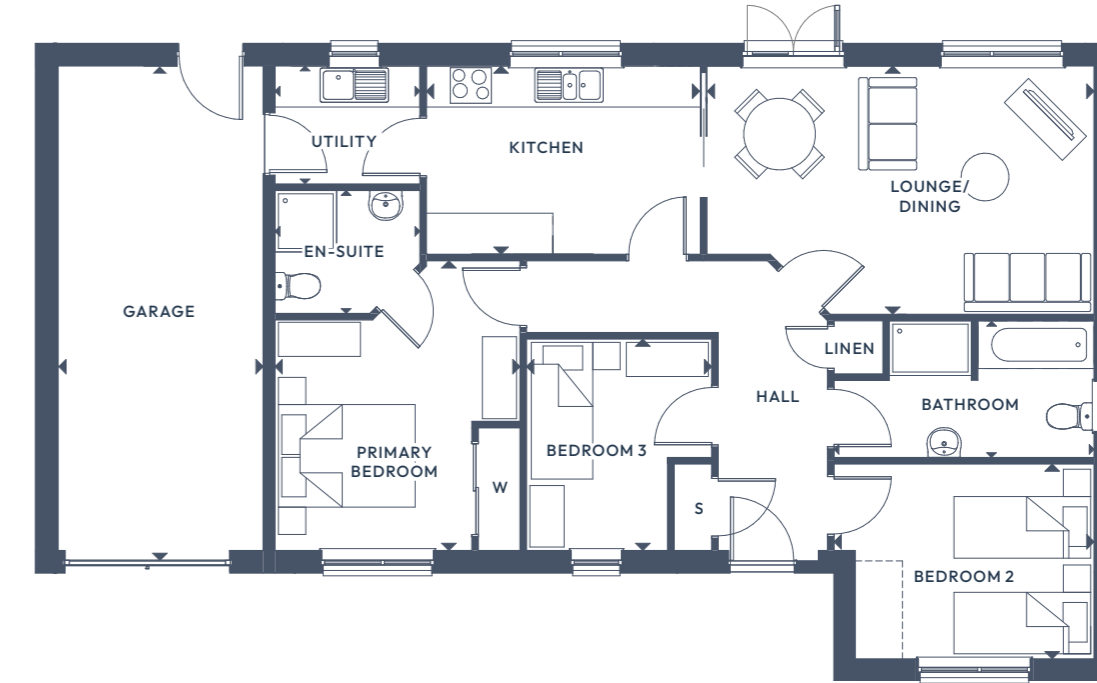




# The Tamarisk.

3 BEDROOM DETACHED BUNGALOW

GROUND FLOOR:



## GROUND FLOOR

Lounge/Dining	5.66m x 3.63m	18'5" x 11'9"	Bedroom 2	3.80m x 2.85m	12'6" x 9'4 1/2"
Kitchen	4.00m x 2.75m	13'2" x 9'0"	Bedroom 3	3.09m x 2.71m	10'2" x 8'10 1/2"
Utility	2.12m x 1.72m	6'11 1/2" x 5'8"	Bathroom	3.80m x 2.00m	12'6" x 6'7"
Primary Bedroom	4.24m x 3.58m	13'11" x 11'9"	Garage	7.00m x 3.00m	22'11" x 9'10"
En-Suite	2.12m x 1.80m	6'11 1/2" x 5'11"			

ALL ROOMS ARE MEASURED FROM POINT TO POINT AS INDICATED ▲

The plans, illustrations, photography and sizes are indicative. The images depict standard specification and optional upgrades. Choices available depending on build stage. We operate a policy of continuous product development and therefore individual features, specification and elevational treatments may vary at the discretion of Campion Homes. Consequently, these particulars do not form any part of any contract.