

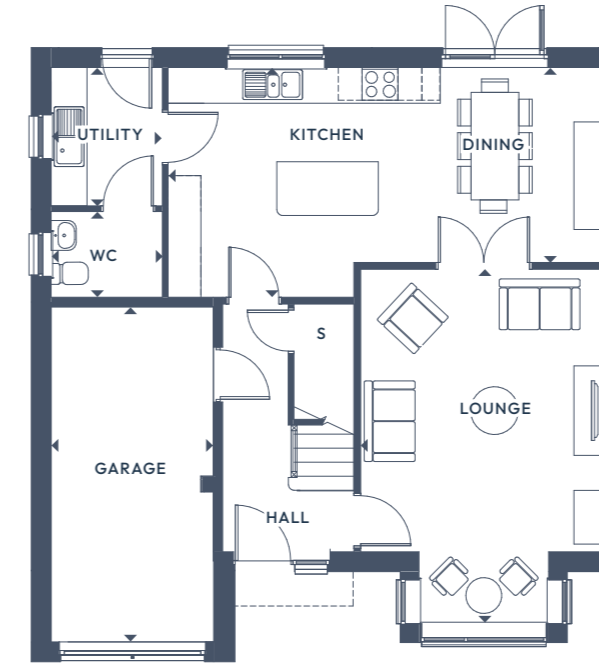


The Oleander.

4 BEDROOM DETACHED

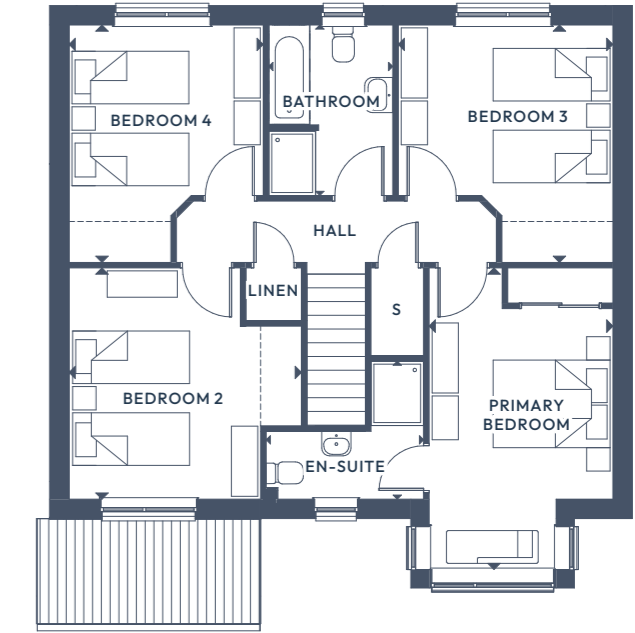
GROUND FLOOR:

FIRST FLOOR:



GROUND FLOOR

Lounge	5.97m x 4.12m	19'7" x 13'6"
Kitchen/Dining	3.85m x 7.35m	12'7 1/2" x 24'1"
Utility	2.32m x 1.86m	7'7 1/2" x 6'1 1/2"
WC	1.44m x 1.86m	4'8 1/2" x 6'1 1/2"
Garage	5.60m x 2.70m	18'4 1/2" x 8'10 1/2"



FIRST FLOOR

Primary Bedroom	5.20m x 3.12m	17'0 1/2" x 10'3"
En-Suite	2.36m x 2.72m	7'9" x 8'11"
Bedroom 2	3.96m x 3.98m	12'11 1/2" x 13'0 1/2"
Bedroom 3	4.06m x 3.67m	13'4" x 12'0 1/2"
Bedroom 4	4.06m x 3.32m	13'4" x 10'11"
Bathroom	2.92m x 2.12m	9'7" x 6'11 1/2"

ALL ROOMS ARE MEASURED FROM POINT TO POINT AS INDICATED ▲

The plans, illustrations, photography and sizes are indicative. The images depict standard specification and optional upgrades. Choices available depending on build stage. We operate a policy of continuous product development and therefore individual features, specification and elevational treatments may vary at the discretion of Campion Homes. Consequently, these particulars do not form any part of any contract.