



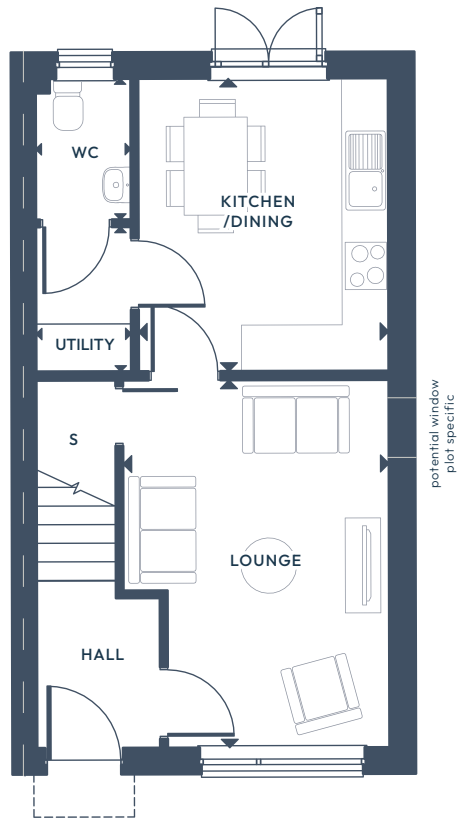
The Mimosa.

2 BEDROOM TERRACED HOME

GROUND FLOOR:     

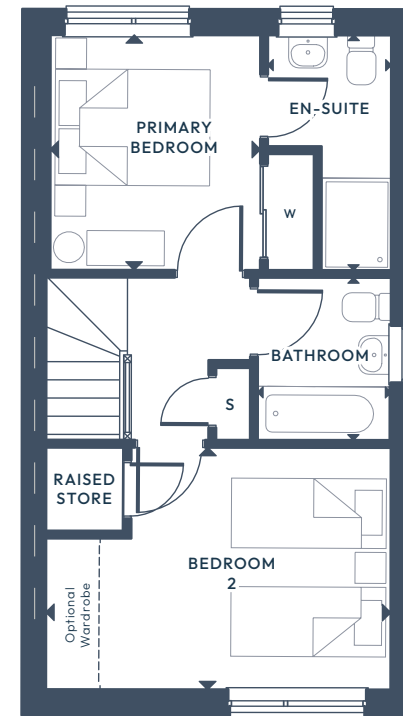
FIRST FLOOR:  





GROUND FLOOR

Lounge	4.65 x 3.36m	15'3" x 11'0"
Kitchen/Dining	3.70 x 3.16m	12'1" x 10'5"
Utility	1.83 x 1.20m	6'0" x 3'11"
WC	1.78 x 1.20m	5'10" x 3'11"



FIRST FLOOR

Primary Bedroom	3.04 x 2.72m	9'11" x 8'11"
En-Suite 1	2.83 x 1.60m	9'4" x 5'3"
Bedroom 2	3.13 x 4.46m	10'3" x 14'7"
Bathroom	2.10 x 1.73m	6'11" x 5'8"

ALL ROOMS ARE MEASURED FROM POINT TO POINT AS INDICATED ▲

The plans, illustrations, photography and sizes are indicative. The images depict standard specification and optional upgrades. Choices available depending on build stage. We operate a policy of continuous product development and therefore individual features, specification and elevational treatments may vary at the discretion of Campion Homes. Consequently, these particulars do not form any part of any contract.

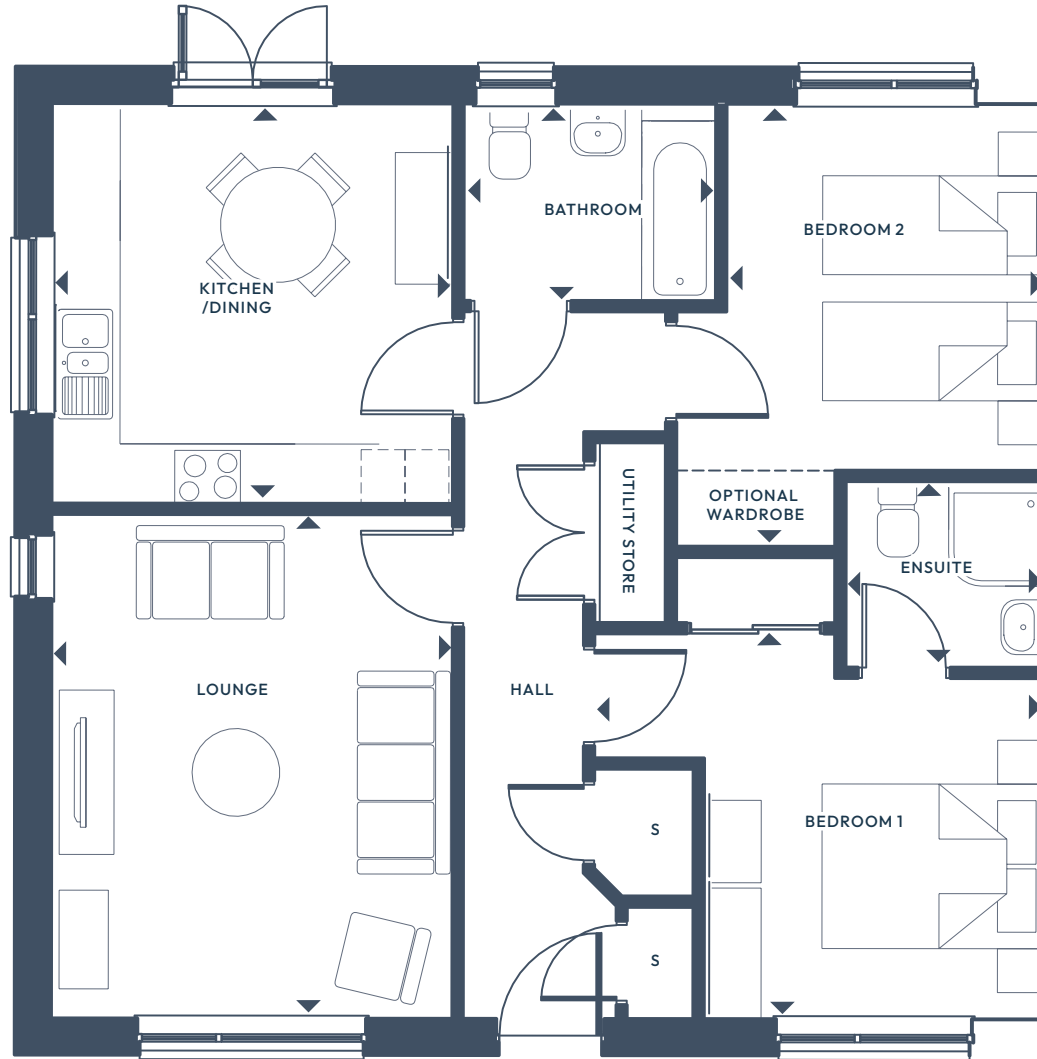


The Aster.

2 BEDROOM SEMI DETACHED BUNGALOW

GROUND FLOOR:     





GROUND FLOOR

GROUND FLOOR

Lounge	4.60 x 3.66m	15'1" x 12'0"
Kitchen/Dining	3.65 x 3.66m	12'0" x 12'0"
Bedroom 1	3.52 x 4.12m	11'7" x 13'6"
Ensuite	1.70 x 1.82m	5'7" x 6'0"
Bedroom 2	4.04 x 3.36m	13'3" x 11'1"
Bathroom	1.80 x 2.30m	5'11" x 7'7"

ALL ROOMS ARE MEASURED FROM POINT TO POINT AS INDICATED ▲

The plans, illustrations, photography and sizes are indicative. The images depict standard specification and optional upgrades. Choices available depending on build stage. We operate a policy of continuous product development and therefore individual features, specification and elevational treatments may vary at the discretion of Campion Homes. Consequently, these particulars do not form any part of any contract.



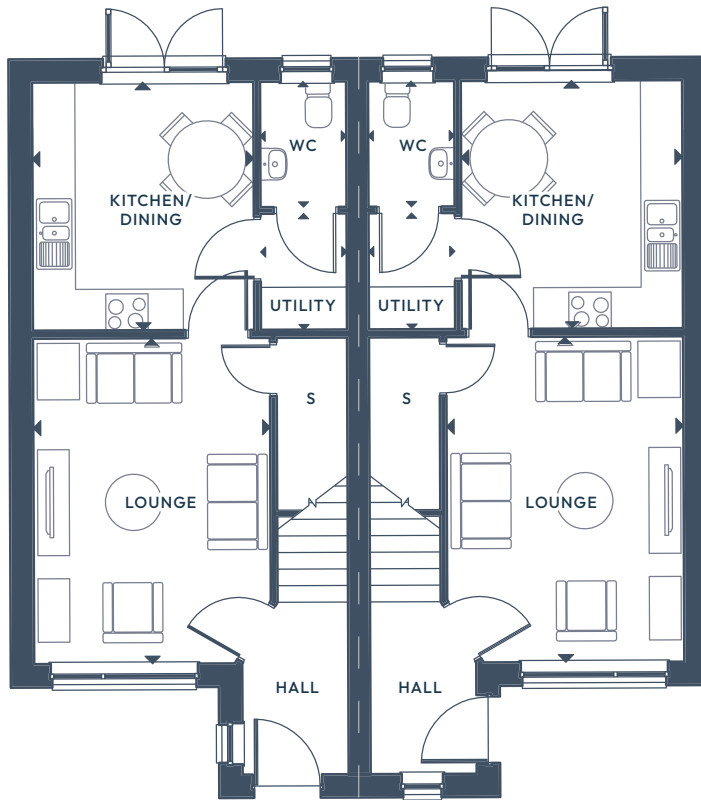
The Hazel.

3 BEDROOM SEMI DETACHED HOME

GROUND FLOOR:    

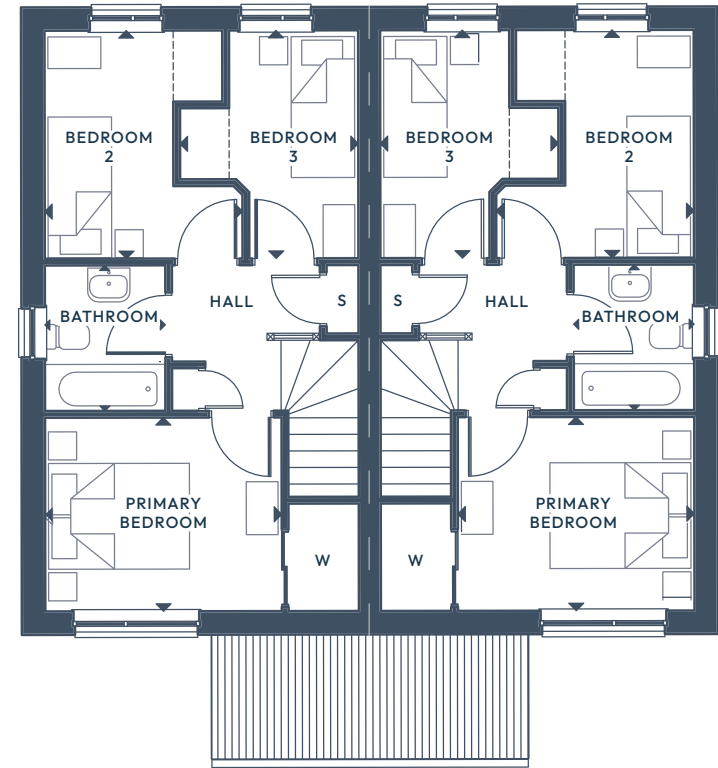
FIRST FLOOR:  





GROUND FLOOR

Lounge	4.61 x 3.36m	15'1" x 11'0"
Kitchen/Dining	3.52 x 3.14m	11'6" x 10'3"
Utility	1.64 x 1.22m	5'4" x 4'0"
WC	1.78 x 1.22m	5'10" x 4'0"



FIRST FLOOR

Primary Bedroom	2.75 x 3.36m	9'0" x 11'0"
Bedroom 2	3.24 x 2.52m	10'7" x 8'4"
Bedroom 3	3.24 x 2.53m	10'7" x 8'3"
Bathroom	2.07 x 1.71m	6'9" x 5'7"

ALL ROOMS ARE MEASURED FROM POINT TO POINT AS INDICATED ▲

The plans, illustrations, photography and sizes are indicative. The images depict standard specification and optional upgrades. Choices available depending on build stage. We operate a policy of continuous product development and therefore individual features, specification and elevational treatments may vary at the discretion of Campion Homes. Consequently, these particulars do not form any part of any contract.



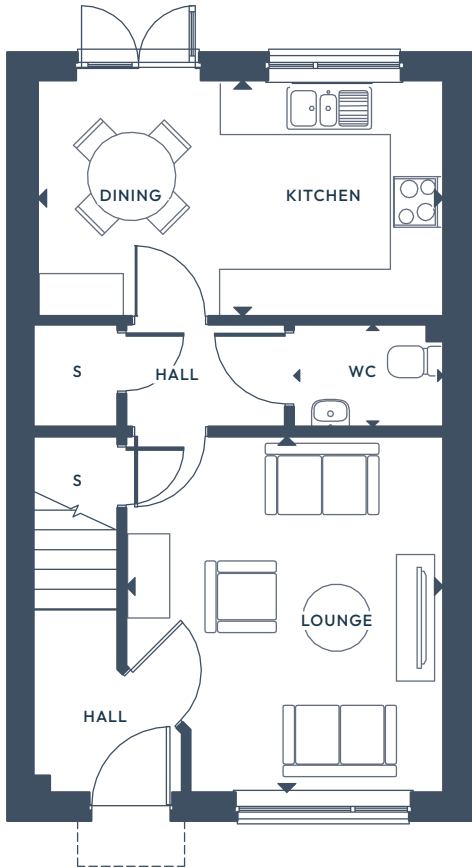
The Holly.

3 BEDROOM TERRACED HOME

GROUND FLOOR:    

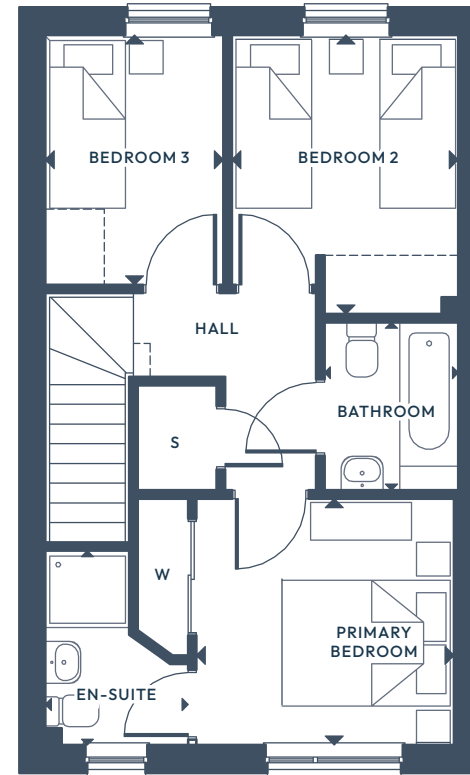
FIRST FLOOR:  x3  x2





GROUND FLOOR

Lounge	4.24 x 3.82m	13'10" x 12'6"
Kitchen/Dining	2.80 x 4.87m	9'2" x 15'11"
WC	1.22 x 1.78m	4'0" x 5'10"



FIRST FLOOR

Primary Bedroom	2.94 x 3.12m	9'7" x 10'3"
En-Suite 1	2.32 x 1.70m	7'7" x 5'7"
Bedroom 2	3.32 x 2.70m	10'11" x 8'10"
Bedroom 3	2.98 x 2.12m	9'9" x 6'11"
Bathroom	2.00 x 1.60m	6'6" x 5'3"

ALL ROOMS ARE MEASURED FROM POINT TO POINT AS INDICATED ▲

The plans, illustrations, photography and sizes are indicative. The images depict standard specification and optional upgrades. Choices available depending on build stage. We operate a policy of continuous product development and therefore individual features, specification and elevational treatments may vary at the discretion of Campion Homes. Consequently, these particulars do not form any part of any contract.

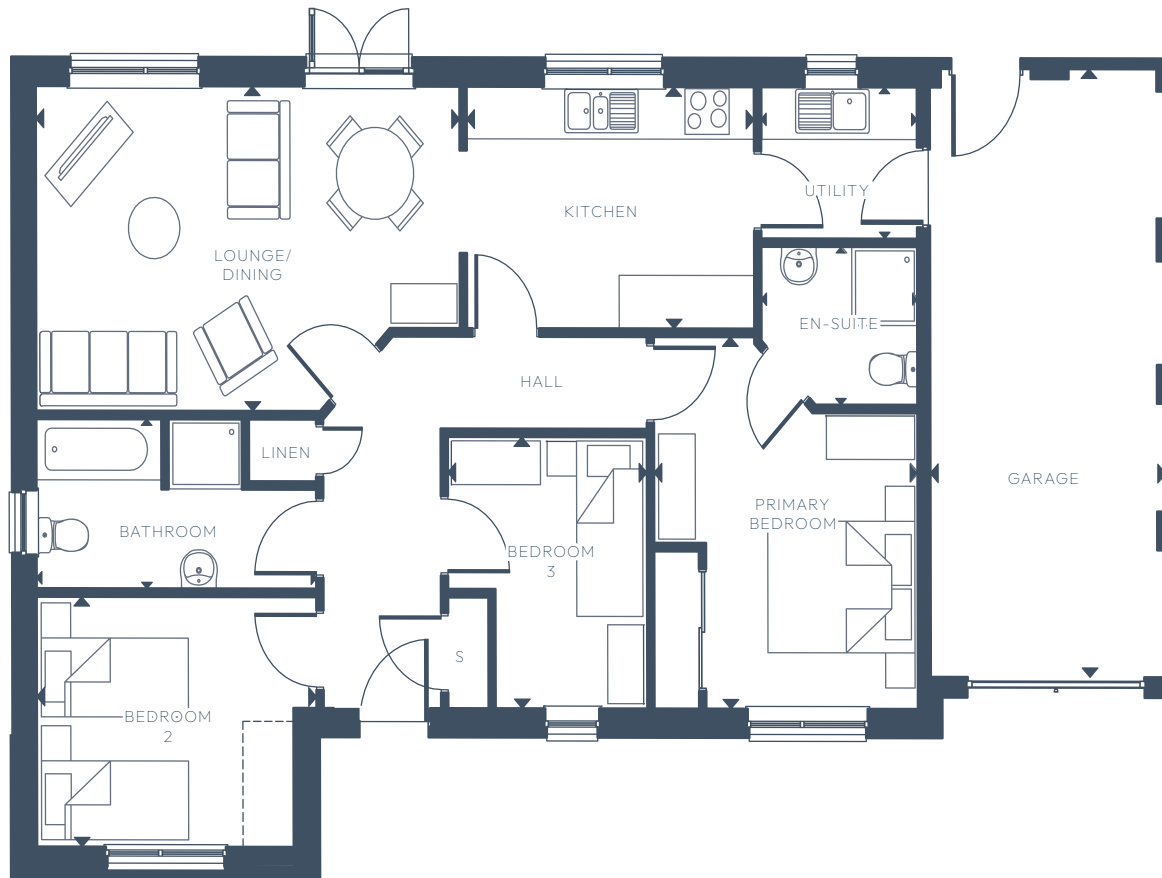


The Tamarisk.

3 BEDROOM DETACHED BUNGALOW

GROUND FLOOR:       





GROUND FLOOR

Lounge/Dining	5.76 x 3.70m	18'11" x 12'2"
Kitchen	3.91 x 2.75m	12'10" x 9'0"
Utility	2.12 x 1.72m	7'0" x 5'8"
Bedroom 1	4.24 x 3.58m	13'11" x 11'9"
En-suite	2.12 x 1.80m	6'11" x 5'11"
Bedroom 2	3.80 x 2.85m	12'6" x 9'5"
Bedroom 3	3.09 x 2.71m	10'2" x 8'11"
Bathroom	3.80 x 1.93m	12'6" x 6'4"
Garage	6.63 x 2.99m	21'9" x 9'10"

GROUND FLOOR

ALL ROOMS ARE MEASURED FROM POINT TO POINT AS INDICATED ▲

The plans, illustrations, photography and sizes are indicative. The images depict standard specification and optional upgrades. Choices available depending on build stage. We operate a policy of continuous product development and therefore individual features, specification and elevational treatments may vary at the discretion of Campion Homes. Consequently, these particulars do not form any part of any contract.



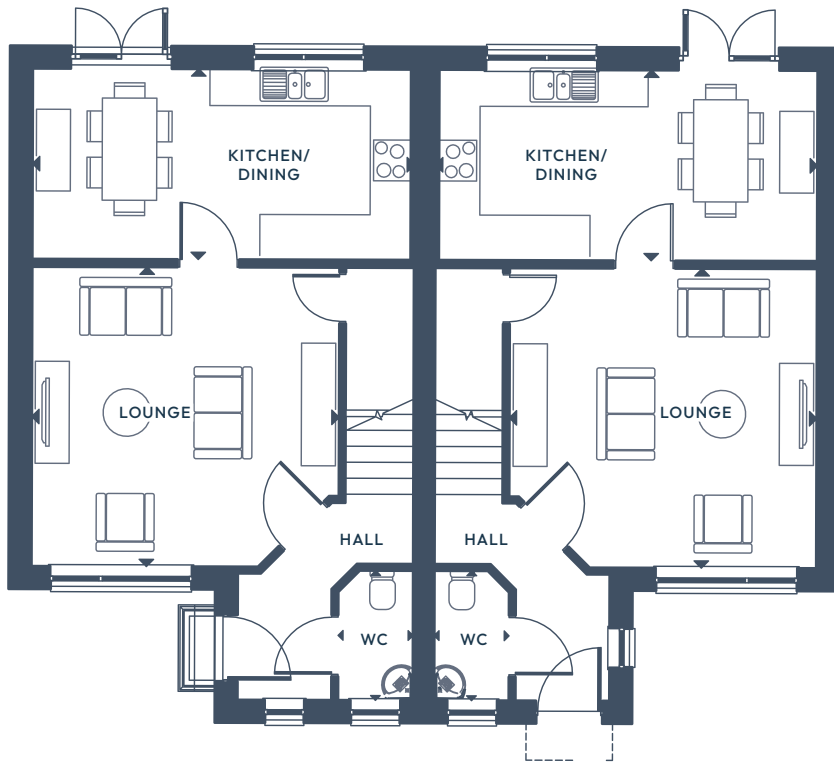
The Myrtle.

3 BEDROOM SEMI DETACHED HOME

GROUND FLOOR:    

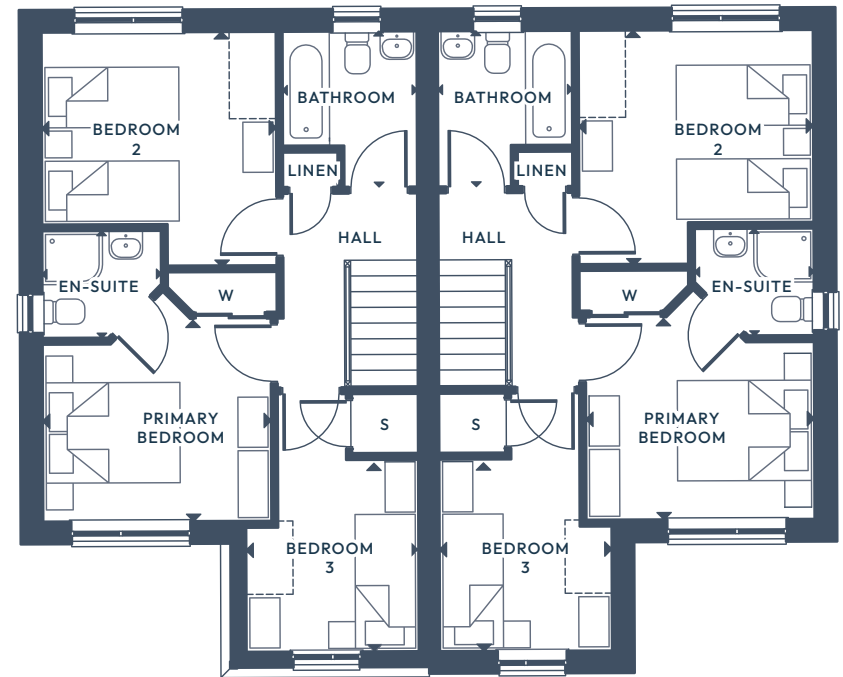
FIRST FLOOR:  x3  x2





GROUND FLOOR

Lounge	4.40 x 4.52m	14'5" x 14'10"
Kitchen/Dining	2.80 x 5.56m	9'2" x 18'3"
WC	1.91 x 1.10m	6'3" x 3'8"



FIRST FLOOR

Primary Bedroom	3.03 x 3.42m	9'11" x 11'2"
En Suite 1	1.60 x 1.78m	5'3" x 5'10"
Bedroom 2	3.49 x 3.51m	11'5" x 11'6"
Bedroom 3	3.85 x 2.58m	12'7" x 8'5"
Bathroom	2.33 x 2.01m	7'7" x 6'7"

ALL ROOMS ARE MEASURED FROM POINT TO POINT AS INDICATED ▲

The plans, illustrations, photography and sizes are indicative. The images depict standard specification and optional upgrades. Choices available depending on build stage. We operate a policy of continuous product development and therefore individual features, specification and elevational treatments may vary at the discretion of Campion Homes. Consequently, these particulars do not form any part of any contract.



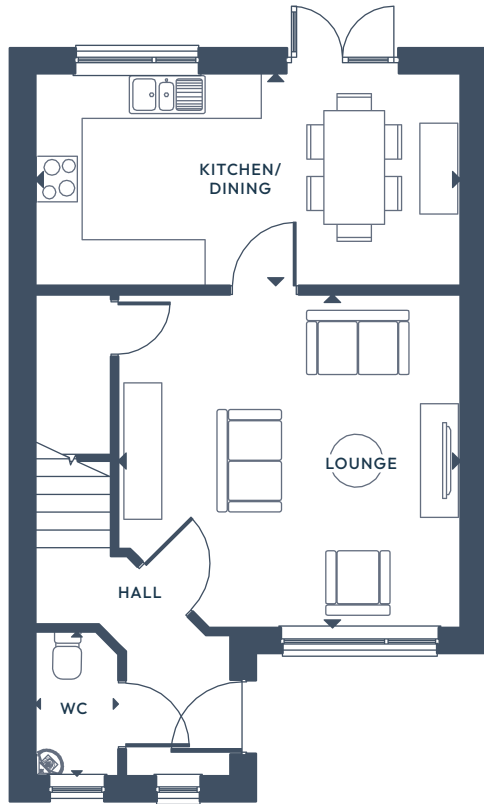
The Alamanda.

3 BEDROOM DETACHED HOME

GROUND FLOOR:    

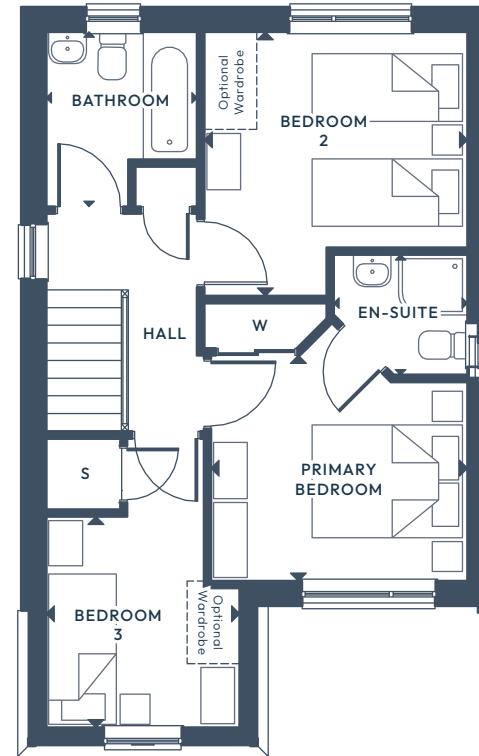
FIRST FLOOR:  x3  x2





GROUND FLOOR

Lounge	4.40 x 4.52m	14'5" x 14'10"
Kitchen/Dining	2.80 x 5.61m	9'2" x 18'5"
WC	1.91 x 1.10m	6'3" x 3'7"



FIRST FLOOR

Primary Bedroom	3.01 x 3.42m	9'10" x 11'2"
En-Suite 1	1.60 x 1.78m	5'3" x 5'10"
Bedroom 2	3.52 x 3.51m	11'6" x 11'6"
Bedroom 2	2.80 x 2.58m	9'2" x 8'5"
Bathroom	2.33 x 2.01m	7'7" x 6'7"

ALL ROOMS ARE MEASURED FROM POINT TO POINT AS INDICATED ▲

The plans, illustrations, photography and sizes are indicative. The images depict standard specification and optional upgrades. Choices available depending on build stage. We operate a policy of continuous product development and therefore individual features, specification and elevational treatments may vary at the discretion of Campion Homes. Consequently, these particulars do not form any part of any contract.



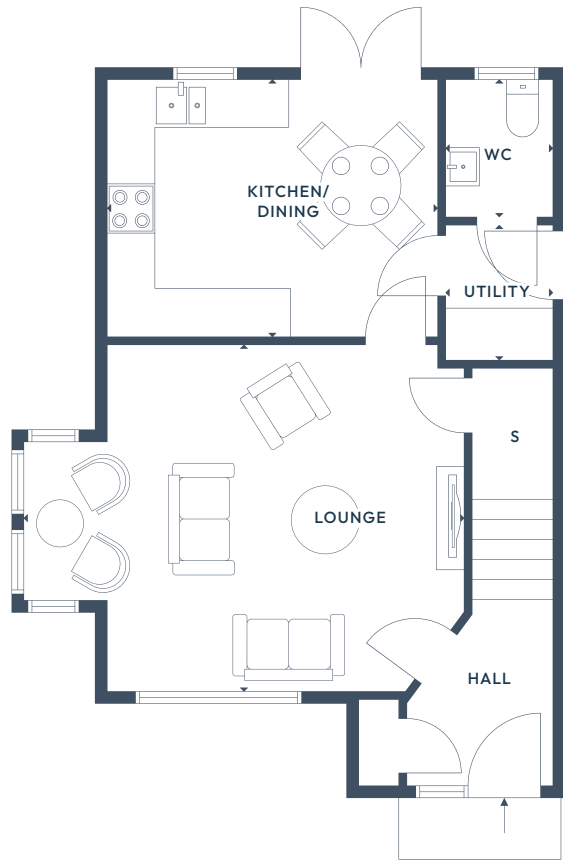
The Lavender.

3 BEDROOM DETACHED HOME

GROUND FLOOR:     

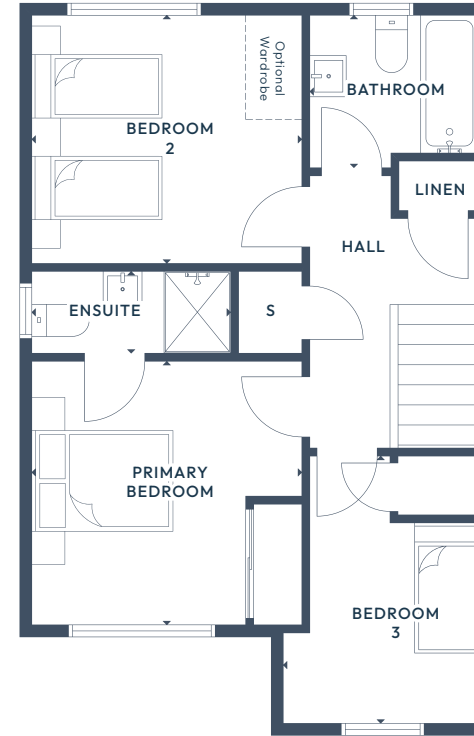
FIRST FLOOR:  x3  x2





GROUND FLOOR

Lounge	4.29 x 5.48m	14'0" x 18'0"
Kitchen/Dining	3.19 x 4.13m	10'5" x 16'6"
Utility	1.63 x 1.34m	5'4" x 4'5"
WC	1.78 x 1.34m	5'10" x 4'5"



FIRST FLOOR

Primary Bedroom	3.29 x 3.37m	10'9" x 11'0"
En-Suite	1.01 x 2.47m	3'4" x 8'1"
Bedroom 2	3.10 x 3.37m	10'2" x 11'0"
Bedroom 3	3.30 x 2.42m	10'10" x 7'11"
Bathroom	1.91 x 2.10m	6'3" x 6'10"

ALL ROOMS ARE MEASURED FROM POINT TO POINT AS INDICATED ▲

The plans, illustrations, photography and sizes are indicative. The images depict standard specification and optional upgrades. Choices available depending on build stage. We operate a policy of continuous product development and therefore individual features, specification and elevational treatments may vary at the discretion of Campion Homes. Consequently, these particulars do not form any part of any contract.



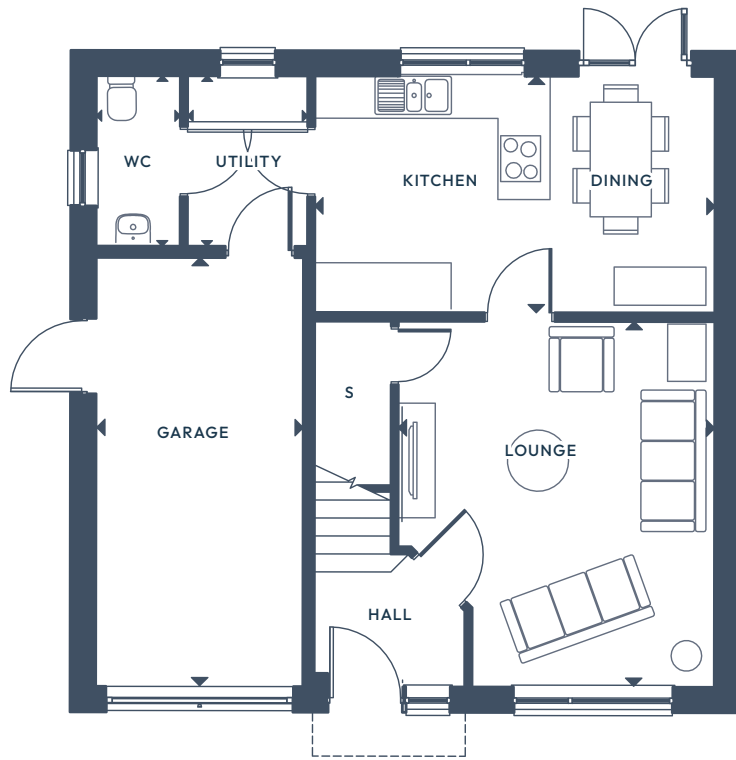
The Wisteria.

4 BEDROOM DETACHED HOME

GROUND FLOOR:     

FIRST FLOOR:  





GROUND FLOOR

Lounge	4.78 x 4.14m	15'8" x 13'7"
Kitchen/Dining	3.09 x 5.23m	10'1" x 17'2"
Utility	2.23 x 1.57m	7'3" x 5'2"
WC	2.23 x 1.10m	7'3" x 3'7"
Garage	5.60 x 2.70m	18'4" x 8'10"



FIRST FLOOR

Primary Bedroom	3.63 x 3.14m	11'11" x 10'3"
En Suite	1.79 x 2.00m	5'10" x 6'7"
Bedroom 2	4.26 x 3.14m	13'11" x 10'3"
Bedroom 3	4.43 x 2.76m	14'6" x 9'1"
Bedroom 4	3.47 x 2.77m	11'4" x 9'1"
Bathroom	2.37 x 2.00m	7'9" x 6'7"




ALL ROOMS ARE MEASURED FROM POINT TO POINT AS INDICATED ▲

The plans, illustrations, photography and sizes are indicative. The images depict standard specification and optional upgrades. Choices available depending on build stage. We operate a policy of continuous product development and therefore individual features, specification and elevational treatments may vary at the discretion of Campion Homes. Consequently, these particulars do not form any part of any contract.



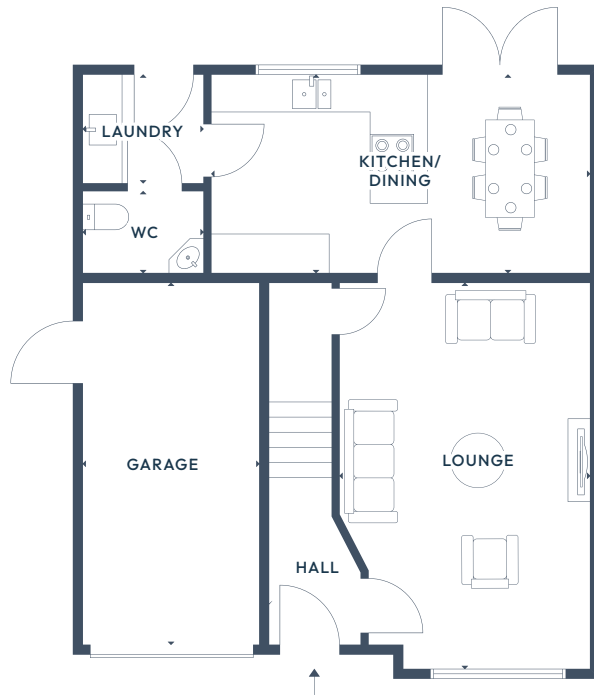
The Laburnum.

4 BEDROOM DETACHED HOME

GROUND FLOOR:      

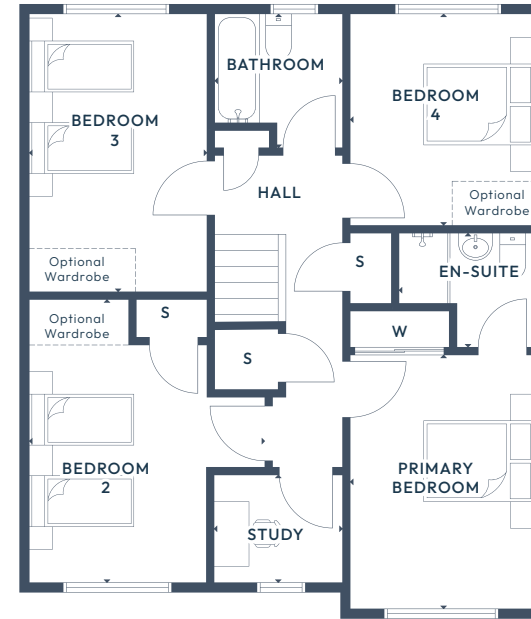
FIRST FLOOR:  x4  x2 





GROUND FLOOR

Lounge	6.00 x 3.90m	19'9" x 12'9"
Kitchen/Dining	3.08 x 5.89m	10'1" x 19'4"
Utility	1.72 x 1.88m	5'7" x 6'2"
WC	1.27 x 1.88m	4'2" x 6'2"
Garage	5.60 x 2.70m	18'4" x 8'10"



FIRST FLOOR

Primary Bedroom	3.94 x 2.90m	12'11" x 9'6"
En-Suite	1.80 x 2.13m	5'10" x 7'0"
Bedroom 2	4.41 x 3.69m	14'5" x 12'11"
Bedroom 3	4.35 x 2.78m	14'3" x 9'1"
Bedroom 4	3.32 x 2.90m	10'10" x 9'6"
Study	1.71 x 2.00m	5'7" x 6'7"
Bathroom	2.16 x 2.00m	6'11" x 6'7"







ALL ROOMS ARE MEASURED FROM POINT TO POINT AS INDICATED ▲

The plans, illustrations, photography and sizes are indicative. The images depict standard specification and optional upgrades. Choices available depending on build stage. We operate a policy of continuous product development and therefore individual features, specification and elevational treatments may vary at the discretion of Campion Homes. Consequently, these particulars do not form any part of any contract.



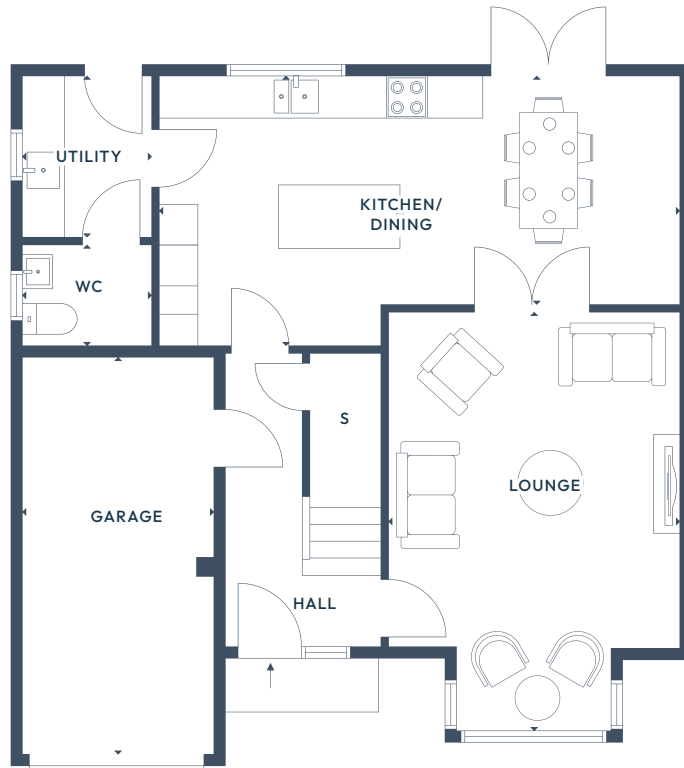
The Oleander.

4 BEDROOM DETACHED HOME

GROUND FLOOR:      

FIRST FLOOR:  x4  x2





GROUND FLOOR

Lounge	5.97 x 4.12m	19'7" x 13'6"
Kitchen/Dining	3.85 x 7.35m	12'7" x 24'1"
Utility	2.32 x 1.86m	7'7" x 6'1"
WC	1.44 x 1.86m	4'8" x 6'1"
Garage	5.60 x 2.70m	18'4" x 8'10"



FIRST FLOOR

Primary Bedroom	5.20 x 3.12m	17'0" x 10'3"
Ensuite	2.36 x 2.72m	7'9" x 8'11"
Bedroom 2	3.96 x 3.98m	12'11" x 13'0"
Bedroom 3	4.06 x 3.67m	13'4" x 12'0"
Bedroom 4	4.06 x 3.32m	13'4" x 10'11"
Bathroom	2.92 x 2.12m	9'7" x 6'11"







ALL ROOMS ARE MEASURED FROM POINT TO POINT AS INDICATED ▲

The plans, illustrations, photography and sizes are indicative. The images depict standard specification and optional upgrades. Choices available depending on build stage. We operate a policy of continuous product development and therefore individual features, specification and elevational treatments may vary at the discretion of Campion Homes. Consequently, these particulars do not form any part of any contract.



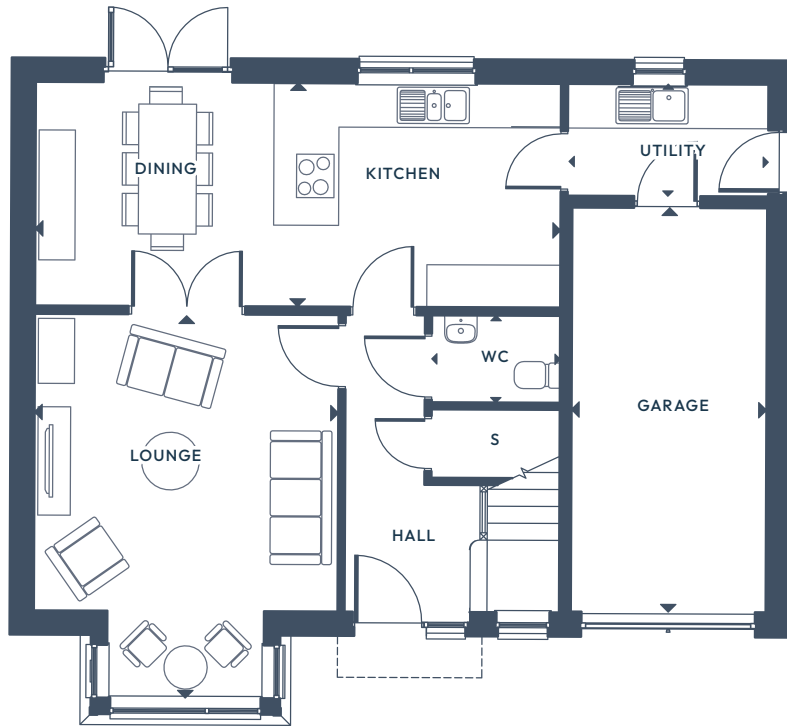
The Jacaranda.

5 BEDROOM DETACHED HOME

GROUND FLOOR:      

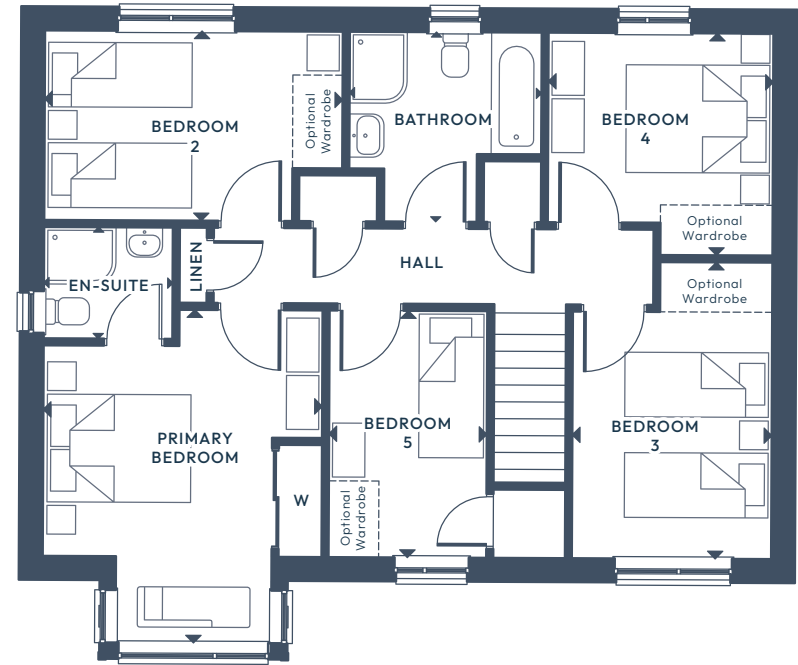
FIRST FLOOR:  x5  x2





GROUND FLOOR

Lounge	5.31 x 4.21m	17'5" x 13'9"
Kitchen/Dining	3.10 x 7.28m	10'2" x 23'10"
Utility	1.55 x 2.78m	5'1" x 9'1"
WC	1.21 x 1.78m	3'11" x 5'10"
Garage	5.60 x 2.70m	18'4" x 8'10"



FIRST FLOOR

Primary Bedroom	4.64 x 3.89m	15'3" x 12'9"
Ensuite	1.55 x 1.80m	5'1" x 5'10"
Bedroom 2	2.65 x 4.15m	8'8" x 13'7"
Bedroom 3	4.13 x 2.79m	13'7" x 9'1"
Bedroom 4	3.10 x 3.13m	10'2" x 10'3"
Bedroom 5	3.44 x 2.20m	11'3" x 7'2"
Bathroom	2.68 x 2.65m	8'9" x 8'8"

ALL ROOMS ARE MEASURED FROM POINT TO POINT AS INDICATED ▲

The plans, illustrations, photography and sizes are indicative. The images depict standard specification and optional upgrades. Choices available depending on build stage, We operate a policy of continuous product development and therefore individual features, specification and elevational treatments may vary at the discretion of Campion Homes. Consequently, these particulars do not form any part of any contract.



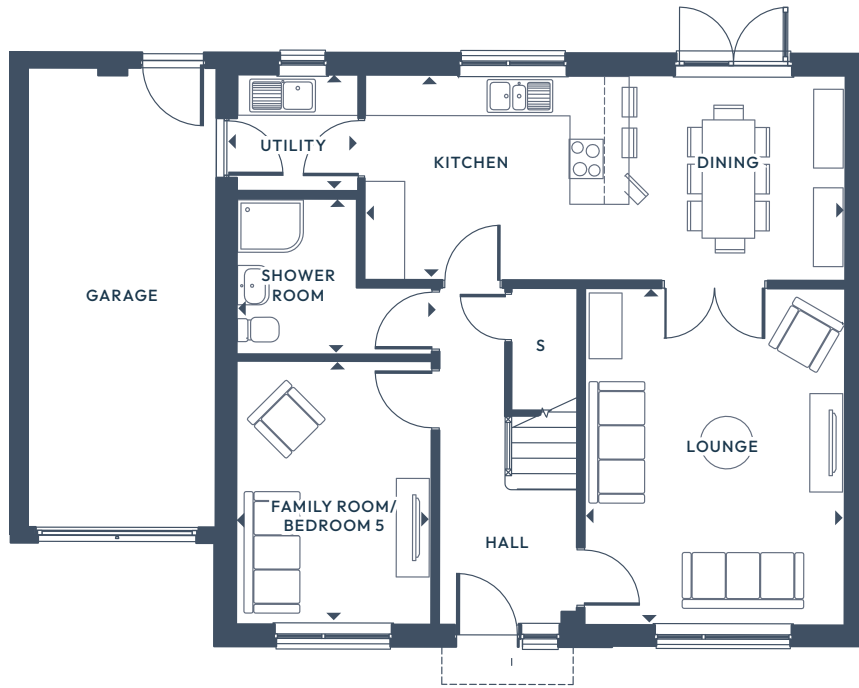
The Orchid.

5 BEDROOM DETACHED HOME

GROUND FLOOR:       

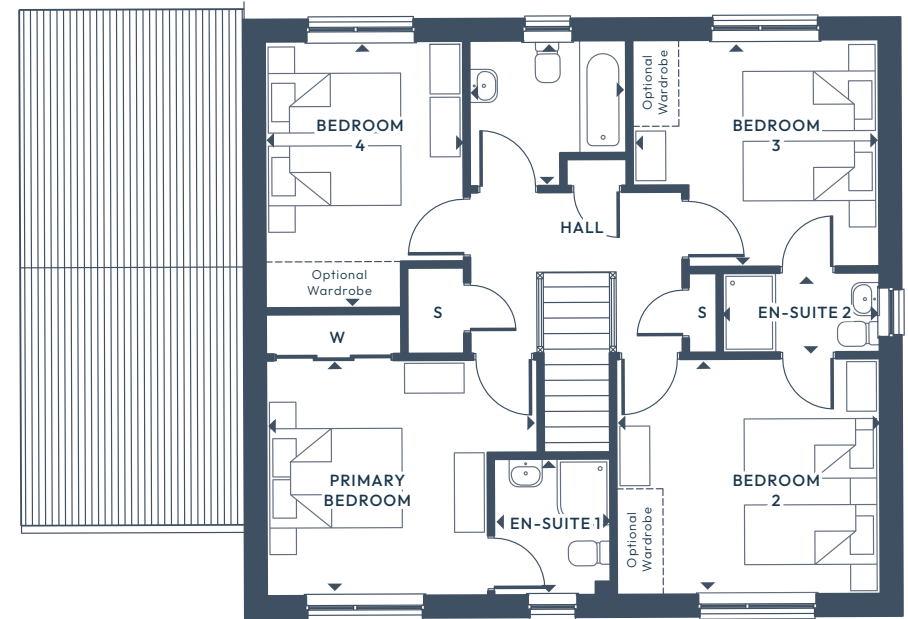
FIRST FLOOR:  x4  x3





GROUND FLOOR

Lounge	5.14 x 3.96m	16'10" x 13'0"
Kitchen/Dining	3.13 x 7.33m	10'3" x 24'0"
Utility	1.78 x 1.85m	5'10" x 6'1"
Shower Room	2.38 x 2.98m	7'9" x 9'9"
Fam Room/Bed 5	4.02 x 2.98m	13'2" x 9'9"
Garage	7.00 x 3.00m	22'11" x 9'10"



FIRST FLOOR

Primary Bedroom	3.56 x 4.10m	11'8" x 13'5"
Ensuite 1	2.06 x 1.76m	6'9" x 5'9"
Bedroom 2	3.56 x 3.98m	11'8" x 13'1"
Ensuite 2	1.20 x 2.37m	3'11" x 7'9"
Bedroom 3	3.43 x 3.72m	11'3" x 12'2"
Bedroom 4	4.03 x 3.00m	13'2" x 9'10"
Bathroom	2.20 x 2.37m	7'2" x 7'9"

ALL ROOMS ARE MEASURED FROM POINT TO POINT AS INDICATED ▲

The plans, illustrations, photography and sizes are indicative. The images depict standard specification and optional upgrades. Choices available depending on build stage. We operate a policy of continuous product development and therefore individual features, specification and elevational treatments may vary at the discretion of Campion Homes. Consequently, these particulars do not form any part of any contract.



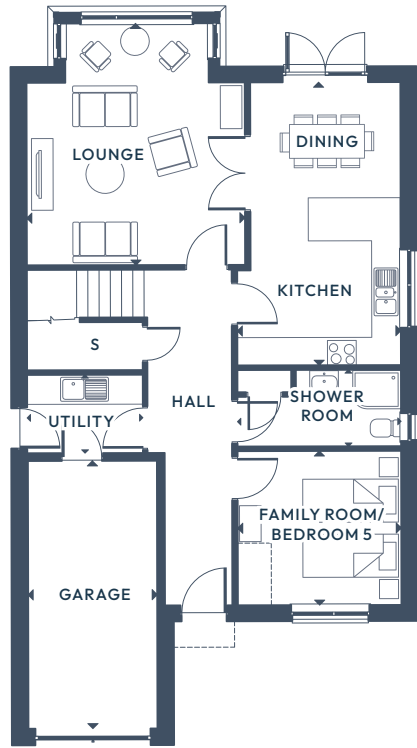
The Japonica.

5 BEDROOM DETACHED VILLA

GROUND FLOOR:      

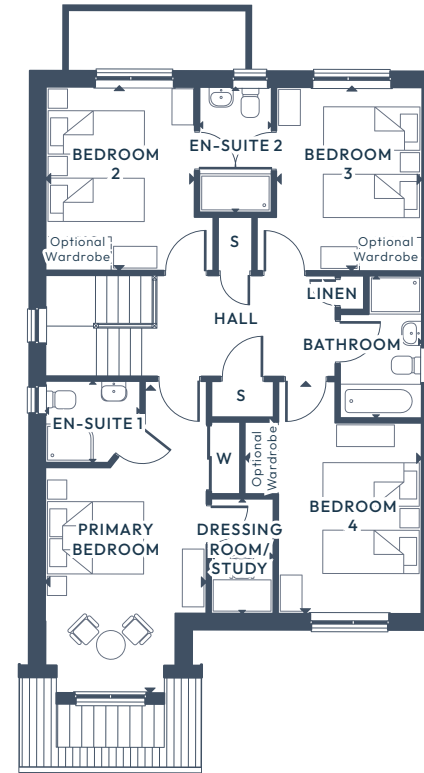
FIRST FLOOR:   





GROUND FLOOR

Lounge	5.05 x 4.56m	16'7" x 14'11"
Kitchen/Dining	5.92 x 3.42m	19'5" x 11'2"
Utility	1.64 x 2.42m	5'4" x 7'11"
Shower Room	1.60 x 3.42m	5'3" x 11'2"
Fam Room/ Bed 5	3.23 x 3.42m	10'7" x 11'2"
Garage	5.60 x 2.70m	18'4" x 8'10"



FIRST FLOOR

Primary Bedroom	6.39 x 3.35m	20'11" x 11'0"
En-Suite 1	1.70 x 1.97m	5'7" x 6'5"
Study	2.39 x 1.30m	7'10" x 4'3"
Bedroom 2	3.82 x 3.49m	12'6" x 11'5"
En-Suite 2	2.60 x 1.50m	8'6" x 4'11"
Bedroom 3	3.82 x 3.43m	12'6" x 11'3"
Bedroom 4	4.83 x 3.68m	15'10" x 12'0"
Bathroom	3.00 x 1.80m	9'8" x 5'11"

ALL ROOMS ARE MEASURED FROM POINT TO POINT AS INDICATED ▲

The plans, illustrations, photography and sizes are indicative. The images depict standard specification and optional upgrades. Choices available depending on build stage. We operate a policy of continuous product development and therefore individual features, specification and elevational treatments may vary at the discretion of Campion Homes. Consequently, these particulars do not form any part of any contract.



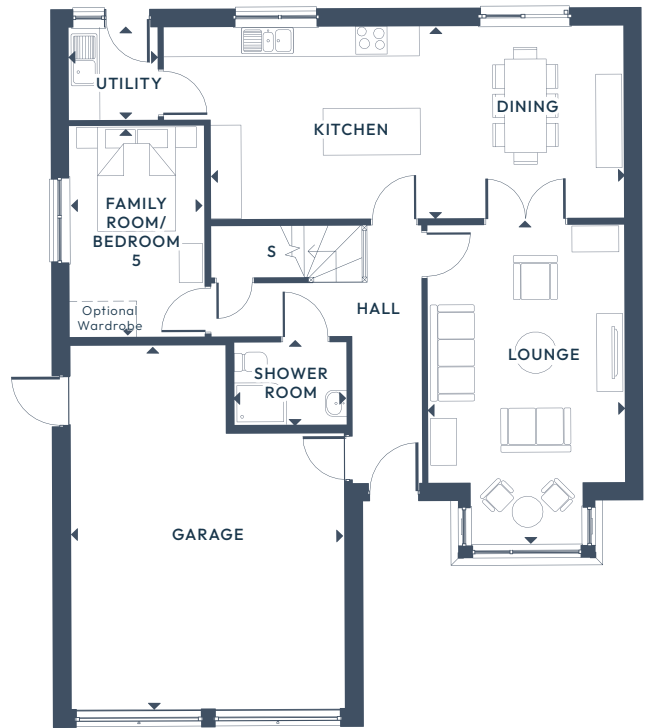
The Azalea.

5 BEDROOM DETACHED HOME

GROUND FLOOR:      

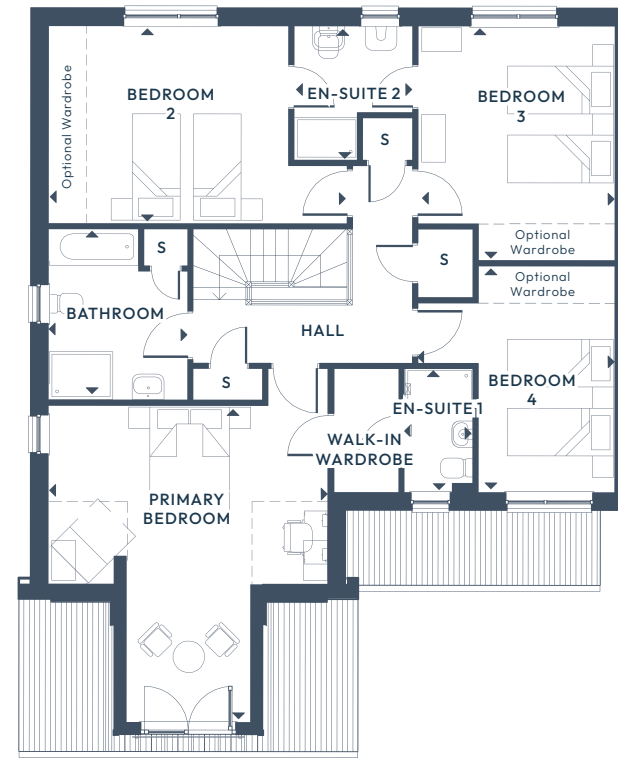
FIRST FLOOR:  





GROUND FLOOR

Lounge	6.17 x 3.80m	20'3" x 12'5"
Kitchen/Dining	8.86 x 3.72m	29'0" x 12'2"
Utility	1.80 x 1.73m	5'11" x 5'8"
Shower Room	1.61 x 2.18m	5'3" x 7'1"
Fam Room/Bed 5	4.08 x 2.61m	13'4" x 8'7"
Garage	7.00 x 5.27m	22'11" x 17'3"



FIRST FLOOR

Primary Bedroom	5.98 x 5.28m	19'7" x 17'3"
En-Suite 1	2.34 x 1.50m	7'8" x 4'11"
Bedroom 2	3.73 x 5.64m	12'3" x 18'6"
En-Suite 2	2.54 x 2.24m	8'4" x 7'4"
Bedroom 3	4.43 x 3.72m	14'6" x 12'2"
Bedroom 4	4.28 x 3.72m	14'1" x 12'2"
Bathroom	3.23 x 2.63m	10'7" x 8'7"

ALL ROOMS ARE MEASURED FROM POINT TO POINT AS INDICATED ▲

The plans, illustrations, photography and sizes are indicative. The images depict standard specification and optional upgrades. Choices available depending on build stage. We operate a policy of continuous product development and therefore individual features, specification and elevational treatments may vary at the discretion of Campion Homes. Consequently, these particulars do not form any part of any contract.



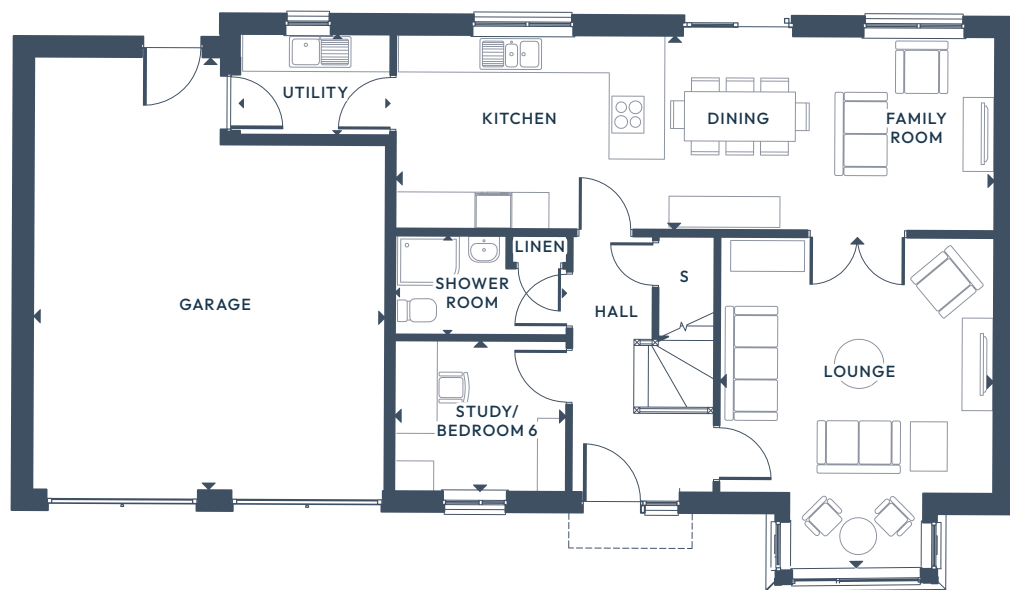
The Camellia.

6 BEDROOM DETACHED HOME

GROUND FLOOR:       

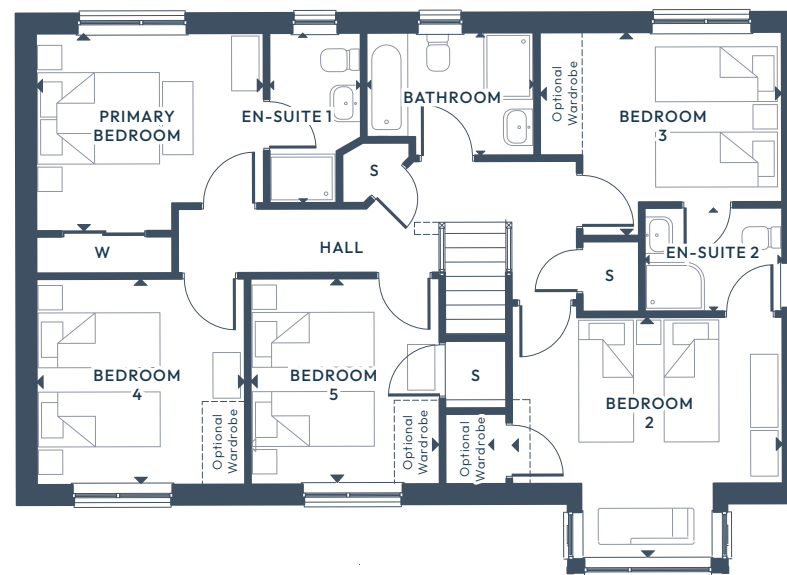
FIRST FLOOR:  x5  x3





GROUND FLOOR

Lounge	5.39 x 4.44m	17'8" x 14'7"
Kitchen/Dining/Family	3.15 x 9.71m	10'4" x 31'10"
Utility	1.63 x 2.43m	5'4" x 8'0"
Shower Room	1.61 x 2.78m	5'3" x 9'1"
Bedroom 6/Study	2.45 x 2.78m	8'0" x 9'1"
Garage	7.00 x 5.70m	22'11" x 18'8"



FIRST FLOOR

Primary Bedroom	3.24 x 3.74m	10'7" x 12'3"
En-suite 1	2.79 x 1.50m	9'2" x 4'11"
Bedroom 2	4.16 x 4.84m	13'8" x 15'10"
En-suite 2	1.70 x 2.26m	5'7" x 7'5"
Bedroom 3	3.34 x 3.97m	10'11" x 13'0"
Bedroom 4	3.38 x 3.42m	11'1" x 11'2"
Bedroom 6	3.38 x 3.79m	11'1" x 15'5"
Bathroom	2.02 x 2.75m	6'7" x 9'0"

ALL ROOMS ARE MEASURED FROM POINT TO POINT AS INDICATED ▲

The plans, illustrations, photography and sizes are indicative. The images depict standard specification and optional upgrades. Choices available depending on build stage, We operate a policy of continuous product development and therefore individual features, specification and elevational treatments may vary at the discretion of Campion Homes. Consequently, these particulars do not form any part of any contract.